

Nur für Forschungszwecke

# 14-3-3 Epsilon Polyklonaler Antikörper



Katalog-Nr.:CL647-11648

Vorgestelltes Produkt

## Allgemeine Informationen

<b>Katalog-Nr.:</b> CL647-11648	<b>GenBank-Zugangsnummer:</b> BC000179	<b>Reinigungsmethode:</b> Antigen-Affinitätsreinigung
<b>Größe:</b> 100ul , Konzentration: 1000 µg/ml von7531 Nanodrop;	<b>GeneID (NCBI):</b> tyrosine 3- monooxygenase/tryptophan 5- monooxygenase activation protein, epsilon polypeptide	<b>Anregungs-/Emissionsmaxima- Wellenlängen:</b> 654 nm / 674 nm
<b>Wirt:</b> Kaninchen	<b>Vollständiger Name:</b> tyrosine 3- monooxygenase/tryptophan 5- monooxygenase activation protein, epsilon polypeptide	
<b>Isotyp:</b> IgG	<b>Berechnete Masse:</b> 255 aa, 29 kDa	
<b>Immunogen Katalognummer:</b> AG2247	<b>Beobachtete Masse:</b> 29-32 kDa	

## Anwendungen

**Geprüfte Anwendungen:**  
FC (Intra)

**Getestete Reaktivität:**  
Human, Maus, Ratte

## Hintergrundinformationen

14-3-3 Epsilon (also known as YWHAE) is a member of 14-3-3 proteins which were the first phosphoserine/phosphothreonine-binding proteins to be discovered. 14-3-3 family members interact with a wide spectrum of proteins and possess diverse functions. Mammals express seven distinct 14-3-3 isoforms (gamma, epsilon, beta, zeta, sigma, theta, tau) that form multiple homo- and hetero- dimers. 14-3-3 proteins display the highest expression levels in the brain, and have been implicated in several neurodegenerative diseases, including Alzheimer's disease and amyotrophic lateral sclerosis. This antibody was raised against full-length 14-3-3 Epsilon.

## Lagerung

**Lagerungsbedingungen:**  
Bei -20°C lagern. Vor Licht schützen. Nach dem Versand ein Jahr stabil.

**Lagerungspuffer:**  
BS mit 50% Glycerin, 0,05% Proclin300, 0,5% BSA, pH 7,3.

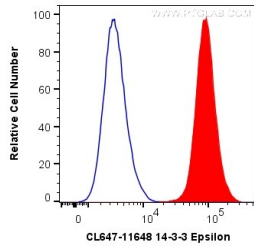
Aliquotieren ist nicht notwendig bei -20°C Lagerung

\*\*\* 20ul-Größen enthalten 0.1% BSA

For technical support and original validation data for this product please contact:  
T: 1 (888) 4PTGLAB (1-888-478-4522) (toll free in USA), or 1(312) 455-8498 (outside USA)  
E: proteintech@ptglab.com  
W: ptglab.com

This product is exclusively available under Proteintech Group brand and is not available to purchase from any other manufacturer.

## Ausgewählte Validierungsdaten



1X10<sup>6</sup> HepG2 cells were intracellularly stained with 0.2 ug CoraLite® Plus 647 Anti-Human 14-3-3 Epsilon (CL647-11648) (red), or 0.2 ug CL647-30000 Rabbit IgG (blue). Cells were fixed with 4% PFA and permeabilized with Flow Cytometry Perm Buffer (PF00011-C).