

Nur für Forschungszwecke

# PKC Beta Polyklonaler Antikörper

Katalog-Nr.:CL647-12919



## Allgemeine Informationen

|   |  |  |
|---|--|--|
| <b>Katalog-Nr.:</b><br>CL647-12919                                      | <b>GenBank-Zugangsnummer:</b><br>BC036472                              | <b>Reinigungsmethode:</b><br>Antigen-Affinitätsreinigung           |
| <b>Größe:</b><br>100ul , Konzentration: 1000 µg/ml von5579<br>Nanodrop; | <b>GeneID (NCBI):</b><br>Vollständiger Name:<br>protein kinase C, beta | <b>Anregungs-/Emissionsmaxima-Wellenlängen:</b><br>654 nm / 674 nm |
| <b>Wirt:</b><br>Kaninchen   | <b>Berechnete Masse:</b><br>673 aa, 77 kDa                             |  |
| <b>Isotyp:</b><br>IgG   | <b>Beobachtete Masse:</b><br>77 kDa                                    |  |
| <b>Immunogen Katalognummer:</b><br>AG3591                               |  |  |

## Anwendungen

**Geprüfte Anwendungen:**  
FC (Intra)

**Getestete Reaktivität:**  
Human, Maus, Ratte

## Hintergrundinformationen

Protein kinase C (PKC) is a family of serine- and threonine-specific protein kinases that can be activated by calcium and second messenger diacylglycerol. Protein kinase Cs (PKCs) are signaling molecules that play key roles in many cellular processes, including secretion, gene expression, proliferation, and muscle contraction. The PKC family is broadly divided into three subgroups: classical, novel, and atypical PKCs. These subgroups differ in both protein sequences and mechanistic requirements for catalytic activity. PKC beta is one of the PKC family members. PKC beta has been reported to be involved in many different cellular functions, such as B cell activation, apoptosis induction, endothelial cell proliferation, and intestinal sugar absorption. Studies in mice also suggest that this kinase may also regulate neuronal functions and correlate fear-induced conflict behavior after stress. This antibody can recognize PKC beta, PKC alpha, PKC gamma, PKC epsilon and PKC delta.

## Lagerung

**Lagerungsbedingungen:**  
Bei -20°C lagern. Vor Licht schützen. Nach dem Versand ein Jahr stabil.

**Lagerungspuffer:**  
BS mit 50% Glycerin, 0,05% Proclin300, 0,5% BSA, pH 7,3.

**Aliquotieren ist nicht notwendig bei -20°C Lagerung**

**\*\*\* 20ul-Größen enthalten 0.1% BSA**

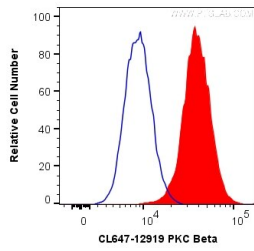
For technical support and original validation data for this product please contact:

T: 1 (888) 4PTGLAB (1-888-478-4522) (toll free in USA), or 1(312) 455-8498 (outside USA)

E: [proteintech@ptglab.com](mailto:proteintech@ptglab.com)  
W: [ptglab.com](http://ptglab.com)

**This product is exclusively available under Proteintech Group brand and is not available to purchase from any other manufacturer.**

## Ausgewählte Validierungsdaten



1X10<sup>6</sup> K-562 cells were intracellularly stained with 0.2 ug CoraLite® Plus 647 Anti-Human PKC Beta (CL647-12919) (red), or 0.2 ug isotype control (blue). Cells were fixed with 4% PFA and permeabilized with Flow Cytometry Perm Buffer (PF00011-C).