

Nur für Forschungszwecke

Liprin Alpha 1 Polyklonaler Antikörper



Katalog-Nr.:CL647-14175

Vorgestelltes Produkt

Allgemeine Informationen

Katalog-Nr.: CL647-14175	GenBank-Zugangsnummer: BC034046	Reinigungsmethode: Antigen-Affinitätsreinigung
Größe: 100ul , Konzentration: 1000 µg/ml von8500 Nanodrop;	GeneID (NCBI): Vollständiger Name: protein tyrosine phosphatase, receptor type, f polypeptide (PTPRF), interacting protein (liprin), alpha 1	Anregungs-/Emissionsmaxima-Wellenlängen: 654 nm / 674 nm
Wirt: Kaninchen	Berechnete Masse: 1202 aa, 136 kDa	
Isotyp: IgG	Beobachtete Masse: 160 kDa	
Immunogen Katalognummer: AG5381		

Anwendungen

Geprüfte Anwendungen:
FC (Intra)

Getestete Reaktivität:
Human, Maus, Ratte

Hintergrundinformationen

Liprin alpha 1, encoded by the PPF1A1 gene, is a member of the LAR protein-tyrosine phosphatase-interacting protein (liprin) family. Liprins interact with members of LAR family of transmembrane protein tyrosine phosphatases, which are known to be important for axon guidance and mammary gland development. Liprin alpha 1 may regulate the disassembly of focal adhesions and thus help orchestrate cell-matrix interactions (PMID: 7796809). Alternatively spliced transcript variants encoding distinct isoforms have been described.

Lagerung

Lagerungsbedingungen:
Bei -20°C lagern. Vor Licht schützen. Nach dem Versand ein Jahr stabil.

Lagerungspuffer:
BS mit 50% Glycerin, 0,05% Proclin300, 0,5% BSA, pH 7,3.

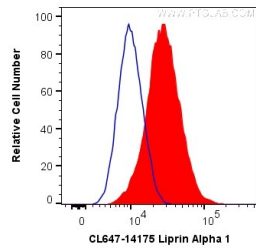
Aliquotieren ist nicht notwendig bei -20°C Lagerung

***** 20ul-Größen enthalten 0.1% BSA**

For technical support and original validation data for this product please contact:
T: 1 (888) 4PTGLAB (1-888-478-4522) (toll free in USA), or 1(312) 455-8498 (outside USA)
E: proteintech@ptglab.com
W: ptglab.com

This product is exclusively available under Proteintech Group brand and is not available to purchase from any other manufacturer.

Ausgewählte Validierungsdaten



1X10⁶ HeLa cells were intracellularly stained with 0.2 ug CoraLite® Plus 647 Anti-Human Liprin Alpha 1 (CL647-14175) (red), or 0.2 ug isotype control (blue). Cells were fixed with 4% PFA and permeabilized with Flow Cytometry Perm Buffer (PF00011-C).