

Nur für Forschungszwecke

PKC Gamma Polyklonaler Antikörper

Katalog-Nr.:CL647-14364



Allgemeine Informationen

Katalog-Nr.: CL647-14364	GenBank-Zugangsnummer: BC047876	Reinigungsmethode: Antigen-Affinitätsreinigung
Größe: 100ul , Konzentration: 1000 µg/ml von5582	GeneID (NCBI): Vollständiger Name: protein kinase C, gamma	Empfohlene Verdünnungen: WB 1:500-1:2000
Nanodrop;	Berechnete Masse: 78 kDa	Anregungs-/Emissionsmaxima-Wellenlängen: 654 nm / 674 nm
Wirt: Kaninchen	Beobachtete Masse: 76-80 kDa	
Isotyp: IgG		
Immunogen Katalognummer: AG5681		

Anwendungen

Geprüfte Anwendungen: WB	Positivkontrollen: WB : Maushirngewebe, Rattenhirngewebe
Getestete Reaktivität: Human, Maus, Ratte	

Hintergrundinformationen

Protein kinase C (PKC) is a family of serine- and threonine-specific protein kinases that can be activated by calcium and second messenger diacylglycerol. PKC family members phosphorylate a wide variety of protein targets and are known to be involved in diverse cellular signaling pathways. PKC gamma is a neuron-specific member of the classical PKCs and is activated and translocated to subcellular regions as a result of various stimuli, including diacylglycerol synthesis, increased intracellular Ca(2+) and phorbol esters. Defects in this protein have been associated with spinocerebellar ataxia type 14 (SCA14), an autosomal dominant neurodegenerative disease.

Lagerung

Lagerungsbedingungen:
Bei -20°C lagern. Vor Licht schützen.
Lagerungspuffer:
BS mit 50% Glycerin, 0,05% Proclin300, 0,5% BSA, pH 7,3.
Aliquotieren ist nicht notwendig bei -20°C Lagerung

***** 20ul-Größen enthalten 0.1% BSA**

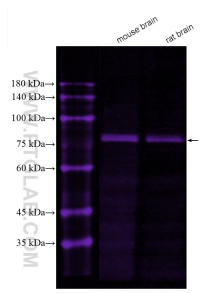
For technical support and original validation data for this product please contact:

T: 1 (888) 4PTGLAB (1-888-478-4522) (toll free in USA), or 1(312) 455-8498 (outside USA)

E: proteintech@ptglab.com
W: ptglab.com

This product is exclusively available under Proteintech Group brand and is not available to purchase from any other manufacturer.

Ausgewählte Validierungsdaten



Various lysates were subjected to SDS PAGE followed by western blot with CL647-14364 (PKC Gamma antibody) at dilution of 1:1000 incubated at room temperature for 1.5 hours.