

Nur für Forschungszwecke

# LC3 Polyklonaler Antikörper

Katalog-Nr.:CL647-14600



## Allgemeine Informationen

<b>Katalog-Nr.:</b> CL647-14600	<b>GenBank-Zugangsnummer:</b> BC067797	<b>Reinigungsmethode:</b> Antigen-Affinitätsreinigung
<b>Größe:</b> 100ul , Konzentration: 1000 µg/ml von81631	<b>GeneID (NCBI):</b> von81631	<b>Empfohlene Verdünnungen:</b> IF 1:250-1:1000
<b>Nanodrop;</b>	<b>Vollständiger Name:</b> microtubule-associated protein 1	<b>Anregungs-/Emissionsmaxima-Wellenlängen:</b> 654 nm / 674 nm
<b>Wirt:</b> Kaninchen	<b>light chain 3 beta</b>	
<b>Isotyp:</b> IgG	<b>Berechnete Masse:</b> 15 kDa	
<b>Immunogen Katalognummer:</b> AG6144		

## Anwendungen

<b>Geprüfte Anwendungen:</b> FC (Intra), IF	<b>Positivkontrollen:</b> IF : mit Chloroquin behandelte HepG2-Zellen,
<b>Getestete Reaktivität:</b> Human, Maus, Ratte	

## Hintergrundinformationen

Map1LC3, also known as LC3, is the human homolog of yeast Atg8 and is involved in the formation of autophagosomal vacuoles, called autophagosomes. Three human Map1LC3 isoforms, MAP1LC3A, MAP1LC3B, and MAP1LC3C, undergo post-translational modifications during autophagy. And they differ in their post-translation modifications during autophagy. Map1LC3 also exists in two modified forms, an 18 kDa cytoplasmic form that was originally identified as a subunit of the microtubule-associated protein 1, and a 14-16 kDa form that is associated with the autophagosome membrane. This antibody can cross react with MAP1LC3A, MAP1LC3B, and MAP1LC3C.

## Lagerung

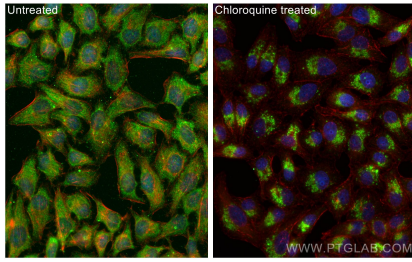
**Lagerungsbedingungen:**  
Bei -20°C lagern. Vor Licht schützen. Nach dem Versand ein Jahr stabil.  
**Lagerungspuffer:**  
BS mit 50% Glycerin, 0,05% Proclin300, 0,5% BSA, pH 7,3.  
**Aliquotieren ist nicht notwendig bei -20°C Lagerung**

**\*\*\* 20ul-Größen enthalten 0.1% BSA**

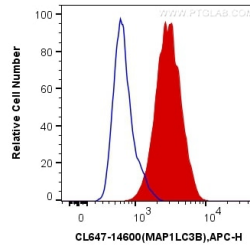
For technical support and original validation data for this product please contact:  
T: 1 (888) 4PTGLAB (1-888-478-4522) (toll free in USA), or 1(312) 455-8498 (outside USA)  
E: proteintech@ptglab.com  
W: ptglab.com

**This product is exclusively available under Proteintech Group brand and is not available to purchase from any other manufacturer.**

## Ausgewählte Validierungsdaten



Immunofluorescent analysis of (-20°C Ethanol) fixed Chloroquine treated HepG2 cells using CoraLite® Plus 647 LC3 antibody (CL647-14600) at dilution of 1:500.



1X10<sup>6</sup> HeLa cells were intracellularly stained with 0.2 ug CoraLite® Plus 647 Anti-Human LC3 (CL647-14600) (red), or 0.2 ug Control Antibody. Cells were fixed with 4% PFA and permeabilized with Flow Cytometry Perm Buffer (PF00011-C).