

Nur für Forschungszwecke

Transgelin-2-specific Polyklonaler Antikörper



Katalog-Nr.:CL647-15508

Vorgestelltes Produkt

Allgemeine Informationen

Katalog-Nr.:

CL647-15508

Größe:

100ul , Konzentration: 1000 µg/ml von8407

Nanodrop;

Wirt:

Kaninchen

Isotyp:

IgG

GenBank-Zugangsnummer:

NM_003564

GeneID (NCBI):

transgelin 2

Vollständiger Name:

transgelin 2

Berechnete Masse:

22 kDa

Beobachtete Masse:

22 kDa

Reinigungsmethode:

Antigen-Affinitätsreinigung

Empfohlene Verdünnungen:

IF 1:50-1:500

Anregungs-/Emissionsmaxima-

Wellenlängen:

654 nm / 674 nm

Anwendungen

Geprüfte Anwendungen:

FC (Intra), IF

Getestete Reaktivität:

Human

Positivkontrollen:

IF : HepG2-Zellen,

Hintergrundinformationen

The transgelin family is a group of proteins that belong to 22 kDa actin-related corpnin superfamily. Of all three isoforms, transgelin 1 is the best characterized. Transgelin 1, also known as SM22 alpha, is a specific marker for differentiated smooth muscle cells. Transgelin 2, also known as SM22 beta, is expressed by both smooth muscle and non-smooth muscle cells in a temporally and spatially regulated pattern. Trangenlin 3, also known as NP25, is only found in highly differentiated neuronal cells. This antibody can bind transgelin 2 specifically, but not trangelin 1 or 3.

Lagerung

Lagerungsbedingungen:

Bei -20°C lagern. Vor Licht schützen. Nach dem Versand ein Jahr stabil.

Lagerungspuffer:

BS mit 50% Glycerin, 0,05% Proclin300, 0,5% BSA, pH 7,3.

Aliquotieren ist nicht notwendig bei -20°C Lagerung

*** 20ul-Größen enthalten 0.1% BSA

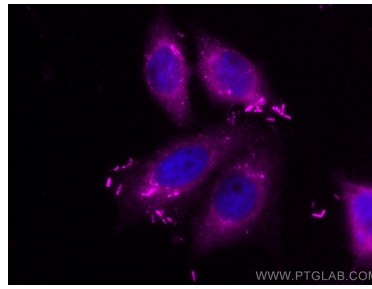
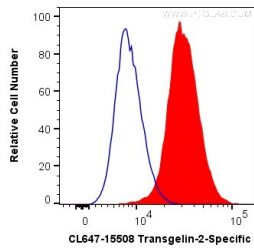
For technical support and original validation data for this product please contact:

T: 1 (888) 4PTGLAB (1-888-478-4522) (toll free in USA), or 1(312) 455-8498 (outside USA)

E: proteintech@ptglab.com
W: ptglab.com

This product is exclusively available under Proteintech Group brand and is not available to purchase from any other manufacturer.

Ausgewählte Validierungsdaten



1X10⁶ HepG2 cells were intracellularly stained with 0.2 ug CoraLite® Plus 647 Anti-Human Transgelin-2-specific (CL647-15508) (red), or 0.2 ug Control Antibody (blue). Cells were fixed with 4% PFA and permeabilized with Flow Cytometry Perm Buffer (PF00011-C).

Immunofluorescent analysis of (4% PFA) fixed HepG2 cells using CoraLite® Plus 647 Transgelin-2-specific antibody (CL647-15508) at dilution of 1:200.