

Nur für Forschungszwecke

Amphiregulin Polyklonaler Antikörper



Katalog-Nr.:CL647-16036

Vorgestelltes Produkt

Allgemeine Informationen

Katalog-Nr.: CL647-16036	GenBank-Zugangsnummer: BC009799	Reinigungsmethode: Antigen-Affinitätsreinigung
Größe: 100ul , Konzentration: 1000 µg/ml von374	GeneID (NCBI): amphiregulin	Empfohlene Verdünnungen: IF 1:50-1:500
Nanodrop;	Vollständiger Name: amphiregulin	Anregungs-/Emissionsmaxima-Wellenlängen: 654 nm / 674 nm
Wirt: Kaninchen	Berechnete Masse: 252 aa, 28 kDa	
Isotyp: IgG		
Immunogen Katalognummer: AG8907		

Anwendungen

Geprüfte Anwendungen: IF	Positivkontrollen: IF : humanes Kolonkarzinomgewebe,
Getestete Reaktivität: Human	

Hintergrundinformationen

Amphiregulin (AREG) is one of the ligands of the epidermal growth factor receptor (EGFR). AREG plays a central role in mammary gland development and branching morphogenesis in organs and is expressed both in physiological and in cancerous tissues. The AREG protein is synthesized as a 252-amino acid transmembrane precursor, pro-AREG. At the plasma membrane, pro-AREG is subjected to sequential proteolytic cleavages within its ectodomain and is then released as the soluble AREG protein. Depending on the cell type and microenvironment, AREG can be produced in multiple cellular and mature forms using alternative pro-AREG cleavage sites and glycosylation motifs. Post-translational modifications of 50-kDa pro-AREG produces a major soluble 43-kDa form, 28-, 26-, 16-kDa membrane anchored forms, and soluble 21-, 19-, and 9-kDa forms (PMID: 9642297).

Lagerung

Lagerungsbedingungen:
Bei -20°C lagern. Vor Licht schützen.
Lagerungspuffer:
BS mit 50% Glycerin, 0,05% Proclin300, 0,5% BSA, pH 7,3.
Aliquotieren ist nicht notwendig bei -20°C Lagerung

*** 20ul-Größen enthalten 0.1% BSA

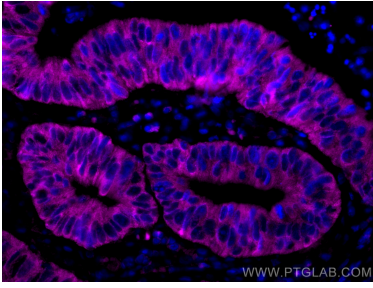
For technical support and original validation data for this product please contact:

T: 1 (888) 4PTGLAB (1-888-478-4522) (toll free in USA), or 1(312) 455-8498 (outside USA)

E: proteintech@ptglab.com
W: ptglab.com

This product is exclusively available under Proteintech Group brand and is not available to purchase from any other manufacturer.

Ausgewählte Validierungsdaten



Immunofluorescent analysis of (4% PFA) fixed human colon cancer tissue using CoraLite® Plus 647 Amphiregulin antibody (CL647-16036) at dilution of 1:200.



Immunofluorescent analysis of (4% PFA) fixed human colon cancer tissue using CoraLite® Plus 647 Amphiregulin antibody (CL647-16036) at dilution of 1:200.