

Nur für Forschungszwecke

# Desmin Polyklonaler Antikörper

Katalog-Nr.:CL647-16520



## Allgemeine Informationen

<b>Katalog-Nr.:</b> CL647-16520	<b>GenBank-Zugangsnummer:</b> BC032116	<b>Reinigungsmethode:</b> Antigen-Affinitätsreinigung
<b>Größe:</b> 100ul , Konzentration: 1000 µg/ml von1674	<b>GeneID (NCBI):</b> von1674	<b>Empfohlene Verdünnungen:</b> IF 1:50-1:500
<b>Nanodrop;</b>	<b>Vollständiger Name:</b> desmin	<b>Anregungs-/Emissionsmaxima-Wellenlängen:</b> 654 nm / 674 nm
<b>Wirt:</b> Kaninchen	<b>Berechnete Masse:</b> 470 aa, 54 kDa	
<b>Isotyp:</b> IgG	<b>Beobachtete Masse:</b> 52-53 kDa	
<b>Immunogen Katalognummer:</b> AG9742		

## Anwendungen

<b>Geprüfte Anwendungen:</b> FC (Intra), IF	<b>Positivkontrollen:</b> IF : Mausherzgewebe,
<b>Getestete Reaktivität:</b> Human, Maus, Ratte	

## Hintergrundinformationen

Desmin is the main intermediate filament protein in skeletal and cardiac muscle cells and is essential for both the structural integrity and the survival of muscle cells. As an abundant muscle-specific protein, desmin has been widely used as a marker of muscle derived tumors. Anti-desmin is also valuable in the differential diagnosis of tumors of uncertain origin.

## Lagerung

**Lagerungsbedingungen:**  
Bei -20°C lagern. Vor Licht schützen.  
**Lagerungspuffer:**  
BS mit 50% Glycerin, 0,05% Proclin300, 0,5% BSA, pH 7,3.  
Aliquotieren ist nicht notwendig bei -20°C Lagerung

\*\*\* 20ul-Größen enthalten 0.1% BSA

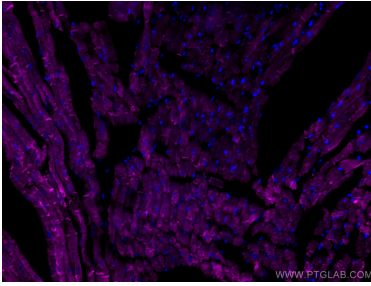
For technical support and original validation data for this product please contact:

T: 1 (888) 4PTGLAB (1-888-478-4522) (toll free in USA), or 1(312) 455-8498 (outside USA)

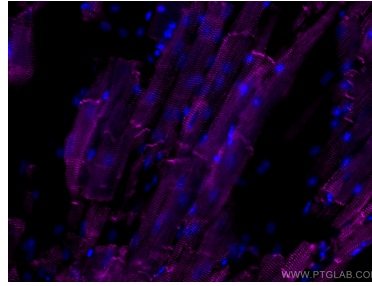
E: [proteintech@ptglab.com](mailto:proteintech@ptglab.com)  
W: [ptglab.com](http://ptglab.com)

This product is exclusively available under Proteintech Group brand and is not available to purchase from any other manufacturer.

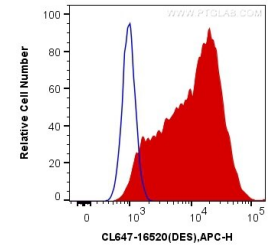
## Ausgewählte Validierungsdaten



Immunofluorescent analysis of (4% PFA) fixed mouse heart tissue using CoraLite® Plus 647 Desmin antibody (CL647-16520) at dilution of 1:200.



Immunofluorescent analysis of (4% PFA) fixed mouse heart tissue using CoraLite® Plus 647 Desmin antibody (CL647-16520) at dilution of 1:200.



1X10<sup>6</sup> C2C12 cells were intracellularly stained with 0.4 ug CoraLite® Plus 647 Anti-Human Desmin (CL647-16520) (red), or 0.4 ug Control Antibody. Cells were fixed with 4% PFA and permeabilized with Flow Cytometry Perm Buffer (PF00011-C).