

Nur für Forschungszwecke

Cytokeratin 17-Specific Polyklonaler Antikörper



Katalog-Nr.:CL647-17516

Vorgestelltes Produkt

Allgemeine Informationen

Katalog-Nr.: CL647-17516	GenBank-Zugangsnummer: NM_000422	Reinigungsmethode: Antigen-Affinitätsreinigung
Größe: 100ul , Konzentration: 1000 µg/ml von3872	GeneID (NCBI): 3872	Empfohlene Verdünnungen: IF 1:50-1:500
Nanodrop;	Vollständiger Name: keratin 17	Anregungs-/Emissionsmaxima-Wellenlängen: 654 nm / 674 nm
Wirt: Kaninchen	Berechnete Masse: 48 kDa	
Isotyp: IgG	Beobachtete Masse: 48 kDa	

Anwendungen

Geprüfte Anwendungen: FC (Intra), IF	Positivkontrollen: IF : HeLa-Zellen,
Getestete Reaktivität: Human, Maus	

Hintergrundinformationen

Keratins are a large family of proteins that form the intermediate filament cytoskeleton of epithelial cells, which are classified into two major sequence types. Type I keratins are a group of acidic intermediate filament proteins, including K9-K23, and the hair keratins Ha1-Ha8. Type II keratins are the basic or neutral counterparts to the acidic type I keratins, including K1-K8, and the hair keratins, Hb1-Hb6. Keratin 17 is a type I cytoke-
ratin. It is found in nail beds, hair follicles, sebaceous glands, and other epidermal appendages. It is used as a marker for trauma. This antibody is specifically against KRT17.

Lagerung

Lagerungsbedingungen:
Bei -20°C lagern. Vor Licht schützen. Nach dem Versand ein Jahr stabil.
Lagerungspuffer:
BS mit 50% Glycerin, 0,05% Proclin300, 0,5% BSA, pH 7,3.
Aliquotieren ist nicht notwendig bei -20°C Lagerung

*** 20ul-Größen enthalten 0.1% BSA

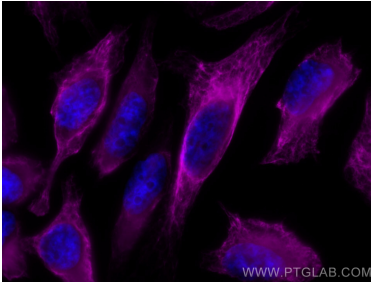
For technical support and original validation data for this product please contact:

T: 1 (888) 4PTGLAB (1-888-478-4522) (toll free in USA), or 1(312) 455-8498 (outside USA)

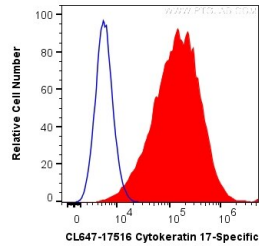
E: proteintech@ptglab.com
W: ptglab.com

This product is exclusively available under Proteintech Group brand and is not available to purchase from any other manufacturer.

Ausgewählte Validierungsdaten



Immunofluorescent analysis of (-20°C Methanol) fixed HeLa cells using CoraLite® Plus 647 Cytokeratin 17-Specific antibody (CL647-17516) at dilution of 1:200.



1×10^6 HeLa cells were intracellularly stained with 0.2 ug CoraLite® Plus 647 Anti-Human Cytokeratin 17-Specific (CL647-17516) (red), or 0.2 ug Control Antibody (blue). Cells were fixed with 4% PFA and permeabilized with Flow Cytometry Perm Buffer (PF00011-C).