

Nur für Forschungszwecke

Synaptophysin Polyklonaler Antikörper

Katalog-Nr.:CL647-17785



Allgemeine Informationen

Katalog-Nr.: CL647-17785	GenBank-Zugangsnummer: BC064550	Reinigungsmethode: Antigen-Affinitätsreinigung
Größe: 100ul , Konzentration: 1000 µg/ml von6855	GeneID (NCBI): synaptophysin	Empfohlene Verdünnungen: IF 1:50-1:500
Nanodrop;	Vollständiger Name: synaptophysin	Anregungs-/Emissionsmaxima-Wellenlängen: 654 nm / 674 nm
Wirt: Kaninchen	Berechnete Masse: 313 aa, 34 kDa	
Isotyp: IgG	Beobachtete Masse: 38-40 kDa	
Immunogen Katalognummer: AG11781		

Anwendungen

Geprüfte Anwendungen: FC (Intra), IF	Positivkontrollen: IF : Maus-Pankreasgewebe, Maushirngewebe
Getestete Reaktivität: Human, Maus	

Hintergrundinformationen

Synaptophysin (SYP, also known as major synaptic vesicle protein p38) is a 38-kDa integral membrane glycoprotein that regulates synaptic vesicle endocytosis. It is the most abundant synaptic vesicle protein by mass. Synaptophysin is present in neuroendocrine cells and neurons that participate in synaptic transmission. Synaptophysin is a useful marker for identification of neuroendocrine cells and neoplasms. (PMID: 3010302; 21658579)

Lagerung

Lagerungsbedingungen:
Bei -20°C lagern. Vor Licht schützen.
Lagerungspuffer:
BS mit 50% Glycerin, 0,05% Proclin300, 0,5% BSA, pH 7,3.
Aliquotieren ist nicht notwendig bei -20°C Lagerung

***** 20ul-Größen enthalten 0.1% BSA**

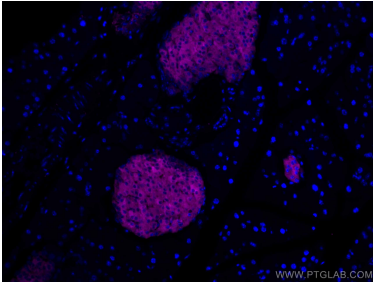
For technical support and original validation data for this product please contact:

T: 1 (888) 4PTGLAB (1-888-478-4522) (toll free in USA), or 1(312) 455-8498 (outside USA)

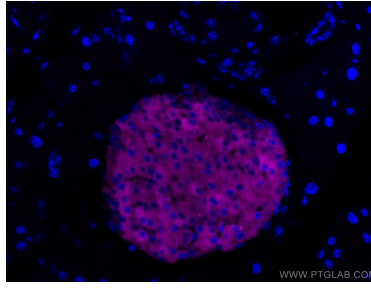
E: proteintech@ptglab.com
W: ptglab.com

This product is exclusively available under Proteintech Group brand and is not available to purchase from any other manufacturer.

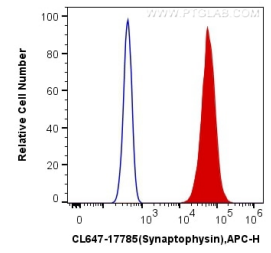
Ausgewählte Validierungsdaten



Immunofluorescent analysis of (4% PFA) fixed mouse pancreas tissue using CoraLite® Plus 647 Synaptophysin antibody (CL647-17785) at dilution of 1:200.



Immunofluorescent analysis of (4% PFA) fixed mouse pancreas tissue using CoraLite® Plus 647 Synaptophysin antibody (CL647-17785) at dilution of 1:200.



1X10⁶ PC-12 cells were intracellularly stained with 0.4 ug CoraLite® Plus 647 Anti-Human Synaptophysin (CL647-17785) (red), or 0.4 ug Control Antibody. Cells were fixed with 4% PFA and permeabilized with Flow Cytometry Perm Buffer (PF00011-C).