

Nur für Forschungszwecke

KDM1 Polyklonaler Antikörper

Katalog-Nr.:CL647-20813

Vorgestelltes Produkt



Allgemeine Informationen

Katalog-Nr.: CL647-20813	GenBank-Zugangsnummer: BC040194	Reinigungsmethode: Antigen-Affinitätsreinigung
Größe: 100ul , Konzentration: 1000 µg/ml von23028	GeneID (NCBI): 23028	Anregungs-/Emissionsmaxima-Wellenlängen: 654 nm / 674 nm
Nanodrop;	Vollständiger Name: lysine (K)-specific demethylase 1	
Wirt: Kaninchen	Berechnete Masse: 876 aa, 95 kDa	
Isotyp: IgG	Beobachtete Masse: 110 kDa	
Immunogen Katalognummer: AG14778		

Anwendungen

Geprüfte Anwendungen:
FC (Intra)

Getestete Reaktivität:
Human

Hintergrundinformationen

Lysine specific demethylase 1 (LSD1/BHC110/KIAA0601/p110b/AOF2/KDM1) is an amine oxidase that catalyzes histone demethylation via a flavin adenine dinucleotide (FAD)-dependent oxidative reaction(PMID:19703393). This protein belongs to the flavin monoamine oxidase family. Its structure and function is conserved from yeast to human and it is typically associated to CoREST, a corepressor protein, and histone deacetylases HDAC1 and HDAC2. Human LSD1 consists of 852 amino acids and comprises an N-terminal SWIRM domain, involved in protein interactions, and a C-terminal amine oxidase domain, which contains an insertion that forms the CoREST interacting site (the so-called tower domain)(PMID:20164337). It has 2 isoforms produced by alternative splicing with the calculated molecular mass of 93-95 kDa and apparent molecular mass of 110 kDa.

Lagerung

Lagerungsbedingungen:
Bei -20°C lagern. Vor Licht schützen. Nach dem Versand ein Jahr stabil.

Lagerungspuffer:
BS mit 50% Glycerin, 0,05% Proclin300, 0,5% BSA, pH 7,3.

Aliquotieren ist nicht notwendig bei -20°C Lagerung

*** 20ul-Größen enthalten 0.1% BSA

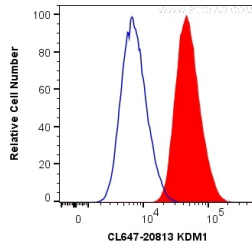
For technical support and original validation data for this product please contact:

T: 1 (888) 4PTGLAB (1-888-478-4522) (toll free in USA), or 1(312) 455-8498 (outside USA)

E: proteintech@ptglab.com
W: ptglab.com

This product is exclusively available under Proteintech Group brand and is not available to purchase from any other manufacturer.

Ausgewählte Validierungsdaten



1X10⁶ MCF-7 cells were intracellularly stained with 0.2 ug CoraLite® Plus 647 Anti-Human KDM1 (CL647-20813) (red), or 0.2 ug CL647-30000; Rabbit IgG Isotype Control (blue). Cells were fixed and permeabilized with Transcription Factor Staining Buffer Kit (PF00011).