

Nur für Forschungszwecke

# PTEN Polyklonaler Antikörper

Katalog-Nr.:CL647-22034

Vorgestelltes Produkt



## Allgemeine Informationen

<b>Katalog-Nr.:</b> CL647-22034	<b>GenBank-Zugangsnummer:</b> BC005821	<b>Reinigungsmethode:</b> Antigen-Affinitätsreinigung
<b>Größe:</b> 100ul , Konzentration: 1000 µg/ml von5728 Nanodrop;	<b>GeneID (NCBI):</b> 5728	<b>Anregungs-/Emissionsmaxima-Wellenlängen:</b> 654 nm / 674 nm
<b>Wirt:</b> Kaninchen	<b>Vollständiger Name:</b> phosphatase and tensin homolog	
<b>Isotyp:</b> IgG	<b>Berechnete Masse:</b> 47 kDa	
<b>Immunogen Katalognummer:</b> AG17274	<b>Beobachtete Masse:</b> 55 kDa, 68 kDa	

## Anwendungen

**Geprüfte Anwendungen:**  
FC (Intra)

**Getestete Reaktivität:**  
Human, Maus

## Hintergrundinformationen

PTEN(Phosphatase and tensin homolog) is also named as MMAC1, TEP1 and it modulates cell cycle progression and cell survival (blockage) through down-regulating the positive cell cycle-regulator (cycle D1) by its phosphatase activity and up-regulating the negative cell cycle regulator p21 (by its lipid phosphatase activity). PTEN is an important tumor suppressor whose inactivation frequency in cancers is ranked second after p53 tumor suppressor inactivation. PTEN is a 403-residue protein structured in an amino (N)-terminal phosphatase domain and a carboxy (C)-terminal C2 domain that binds phospholipid membranes.(PMID:14749127). There are some report showing that SUMOylation appears to be a positive regulator in controlling PTEN membrane association, whereas phosphorylation is a negative regulator that may neutralize SUMOylation through intramolecular electrostatic interactions (PMID:22713753). This antibody can recognize two isoforms with MW of 55kDa and 68 kDa.

## Lagerung

**Lagerungsbedingungen:**  
Bei -20°C lagern. Vor Licht schützen. Nach dem Versand ein Jahr stabil.

**Lagerungspuffer:**  
BS mit 50% Glycerin, 0,05% Proclin300, 0,5% BSA, pH 7,3.

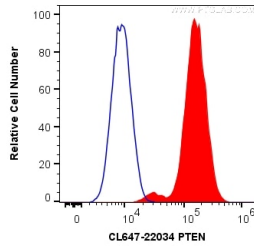
**Aliquotieren ist nicht notwendig bei -20°C Lagerung**

**\*\*\* 20ul-Größen enthalten 0.1% BSA**

For technical support and original validation data for this product please contact:  
T: 1 (888) 4PTGLAB (1-888-478-4522) (toll free in USA), or 1(312) 455-8498 (outside USA)  
E: proteintech@ptglab.com  
W: ptglab.com

**This product is exclusively available under Proteintech Group brand and is not available to purchase from any other manufacturer.**

## Ausgewählte Validierungsdaten



1X10<sup>6</sup> HeLa cells were intracellularly stained with 0.2 ug CoraLite® Plus 647 Anti-Human PTEN (CL647-22034) (red), or 0.2 ug isotype control (blue). Cells were fixed with 4% PFA and permeabilized with Flow Cytometry Perm Buffer (PF00011-C).