

Nur für Forschungszwecke

LHCGR Polyklonaler Antikörper

Katalog-Nr.:CL647-26424

Vorgestelltes Produkt



Allgemeine Informationen

Katalog-Nr.: CL647-26424	GenBank-Zugangsnummer: BC157028	Reinigungsmethode: Antigen-Affinitätsreinigung
Größe: 100ul, Konzentration: 1000 µg/ml von3973	GeneID (NCBI): 3973	Empfohlene Verdünnungen: IF 1:50-1:500
Nanodrop;	Vollständiger Name: LHCGR	Anregungs-/Emissionsmaxima-Wellenlängen: 654 nm / 674 nm
Wirt: Kaninchen	Berechnete Masse: 699 aa, 79 kDa	
Isotyp: IgG	Beobachtete Masse: 100 kDa	
Immunogen Katalognummer: AG19259		

Anwendungen

Geprüfte Anwendungen: FC (Intra), IF	Positivkontrollen: IF : Maus-Eierstockgewebe,
Getestete Reaktivität: Human, Maus	

Hintergrundinformationen

LHCGR, also known as LHR or LSHR, belongs to the rhodopsin-like family of G protein-coupled receptors (GPCRs) and plays a crucial role in the regulation of gonadal functions by stimulating steroidogenesis in response to luteinizing hormone (LH) or hCG (PMID: 15866423). Mutations in LHCGR gene result in familial male-limited precocious puberty, Leydig cell hypoplasia, and empty follicle syndrome (PMID: 30711030). LHCGR protein consists of 699 amino acids with a calculated molecular weight of 79 kDa. Due to massive glycosylation, the molecular mass of the mature LHCGR is higher (85-100 kDa) than the predicted molecular protein mass of 79 kDa (PMID: 23686864; 15866423; 29075189; 15969756).

Lagerung

Lagerungsbedingungen:
Bei -20°C lagern. Vor Licht schützen. Nach dem Versand ein Jahr stabil.
Lagerungspuffer:
BS mit 50% Glycerin, 0,05% Proclin300, 0,5% BSA, pH 7,3.
Aliquotieren ist nicht notwendig bei -20°C Lagerung

*** 20ul-Größen enthalten 0.1% BSA

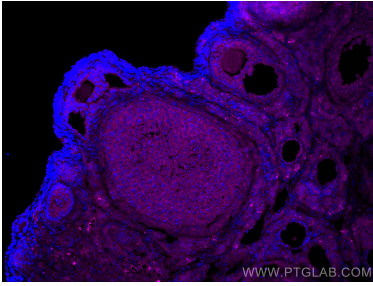
For technical support and original validation data for this product please contact:

T: 1 (888) 4PTGLAB (1-888-478-4522) (toll free in USA), or 1(312) 455-8498 (outside USA)

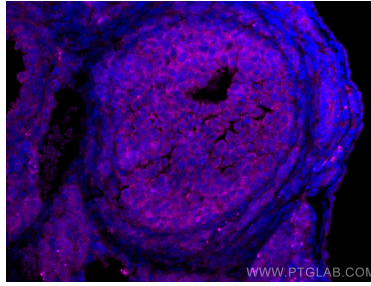
E: proteintech@ptglab.com
W: ptglab.com

This product is exclusively available under Proteintech Group brand and is not available to purchase from any other manufacturer.

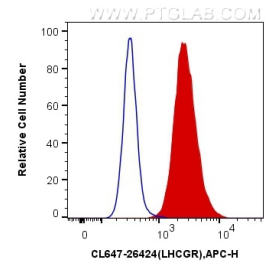
Ausgewählte Validierungsdaten



Immunofluorescent analysis of (4% PFA) fixed mouse ovary tissue using CoraLite® Plus 647 LHCGR antibody (CL647-26424) at dilution of 1:200.



Immunofluorescent analysis of (4% PFA) fixed mouse ovary tissue using CoraLite® Plus 647 LHCGR antibody (CL647-26424) at dilution of 1:200.



1X10⁶ Jurkat cells were intracellularly stained with 0.4 µg CoraLite® Plus 647 Anti-Human LHCGR (CL647-26424) (red), or 0.4 µg x. Cells were fixed with 4% PFA and permeabilized with Flow Cytometry Perm Buffer (PF00011-C).