

Nur für Forschungszwecke

Bcl-XL Polyklonaler Antikörper

Katalog-Nr.:CL647-26967



Allgemeine Informationen

Katalog-Nr.: CL647-26967	GenBank-Zugangsnummer: BC019307	Reinigungsmethode: Antigen-Affinitätsreinigung
Größe: 100ul , Konzentration: 1000 µg/ml von598 Nanodrop;	GeneID (NCBI): Vollständiger Name: BCL2-like 1	Empfohlene Verdünnungen: IF 1:50-1:500
Wirt: Kaninchen	Berechnete Masse: 26 kDa	Anregungs-/Emissionsmaxima- Wellenlängen: 654 nm / 674 nm
Isotyp: IgG	Beobachtete Masse: 30 kDa	
Immunogen Katalognummer: AG25604		

Anwendungen

Geprüfte Anwendungen: FC (Intra), IF	Positivkontrollen: IF : HepG2-Zellen,
Getestete Reaktivität: Human, Maus	

Hintergrundinformationen

BCL2L1 is a member of the BCL-2 protein family. BCL2L1 is expressed as three isoforms, Bcl-X(L), Bcl-X(s) and Bcl-X(beta), and is located at the outer mitochondrial membrane. The Bcl-XL isoform is a 233 amino acid protein, acting as an apoptotic inhibitor. Bcl-XL can form heterodimers with BAX, BAK or BCL2, and the heterodimerization with BAX does not seem to be required for anti-apoptotic activity. The Bcl-XS isoform is a shorter variant that is 178 amino acids in length and lacks a 63 amino acid region (amino acids 126-188), acting as an apoptotic activator. This antibody can recognize Bcl-XL, Bcl-XS and Bcl-X(Beta).

Lagerung

Lagerungsbedingungen:
Bei -20°C lagern. Vor Licht schützen. Nach dem Versand ein Jahr stabil.
Lagerungspuffer:
BS mit 50% Glycerin, 0,05% Proclin300, 0,5% BSA, pH 7,3.
Aliquotieren ist nicht notwendig bei -20°C Lagerung

***** 20ul-Größen enthalten 0.1% BSA**

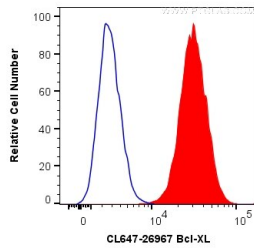
For technical support and original validation data for this product please contact:

T: 1 (888) 4PTGLAB (1-888-478-4522) (toll free
in USA), or 1(312) 455-8498 (outside USA)

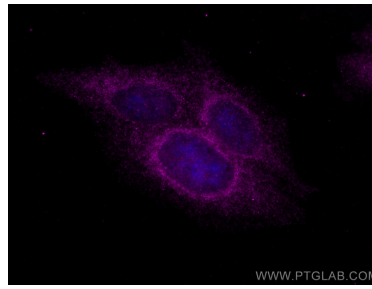
E: proteintech@ptglab.com
W: ptglab.com

This product is exclusively available under Proteintech Group brand and is not available to purchase from any other manufacturer.

Ausgewählte Validierungsdaten



1X10⁶ Jurkat cells were intracellularly stained with 0.2 ug CoraLite® Plus 647 Anti-Human Bcl-XL (CL647-26967) (red), or 0.2 ug CL647-30000 Rabbit IgG (blue). Cells were fixed with 4% PFA and permeabilized with Flow Cytometry Perm Buffer (PF00011-C).



Immunofluorescent analysis of (4% PFA) fixed HepG2 cells using CoraLite® Plus 647 Bcl-XL antibody (CL647-26967) at dilution of 1:200.