

Nur für Forschungszwecke

# calreticulin Polyklonaler Antikörper

Katalog-Nr.:CL647-27298

Vorgestelltes Produkt



## Allgemeine Informationen

<b>Katalog-Nr.:</b> CL647-27298	<b>GenBank-Zugangsnummer:</b> BC002500	<b>Reinigungsmethode:</b> Antigen-Affinitätsreinigung
<b>Größe:</b> 100ul , Konzentration: 1000 µg/ml von811 Nanodrop;	<b>GeneID (NCBI):</b> calreticulin	<b>Empfohlene Verdünnungen:</b> IF 1:50-1:500
<b>Wirt:</b> Kaninchen	<b>Vollständiger Name:</b> calreticulin	<b>Anregungs-/Emissionsmaxima-Wellenlängen:</b> 654 nm / 674 nm
<b>Isotyp:</b> IgG	<b>Berechnete Masse:</b> 60 kDa	
<b>Immunogen Katalognummer:</b> AG26064	<b>Beobachtete Masse:</b> 55 kDa	

## Anwendungen

<b>Geprüfte Anwendungen:</b> FC (Intra), IF	<b>Positivkontrollen:</b> IF : HepG2-Zellen,
<b>Getestete Reaktivität:</b> Human, Maus, Ratte	

## Hintergrundinformationen

CALR, also named as grp60, ERp60, HACBP, CRP55, CRTC and Calregulin, belongs to the calreticulin family. It is a molecular calcium-binding chaperone promoting folding, oligomeric assembly and quality control in the ER via the calreticulin/calnexin cycle. CALR is a ER marker. It interacts transiently with almost all of the monoglucosylated glycoproteins that are synthesized in the ER. CALR interacts with the DNA-binding domain of NR3C1 and mediates its nuclear export. The MW of CALR migrates aberrantly at 60 kD by SDS-PAGE. Some study provided that it's a new possibility for CRT-mediated tumor immune prevention and treatment.

## Lagerung

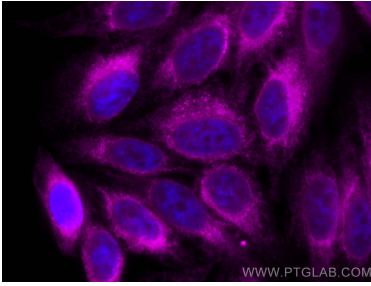
**Lagerungsbedingungen:**  
Bei -20°C lagern. Vor Licht schützen. Nach dem Versand ein Jahr stabil.  
**Lagerungspuffer:**  
BS mit 50% Glycerin, 0,05% Proclin300, 0,5% BSA, pH 7,3.  
**Aliquotieren ist nicht notwendig bei -20°C Lagerung**

**\*\*\* 20ul-Größen enthalten 0.1% BSA**

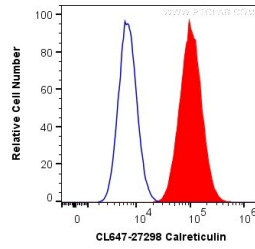
For technical support and original validation data for this product please contact:  
T: 1 (888) 4PTGLAB (1-888-478-4522) (toll free in USA), or 1(312) 455-8498 (outside USA)  
E: proteintech@ptglab.com  
W: ptglab.com

This product is exclusively available under Proteintech Group brand and is not available to purchase from any other manufacturer.

## Ausgewählte Validierungsdaten



Immunofluorescent analysis of (4% PFA) fixed HepG2 cells using CoraLite® Plus 647 calreticulin antibody (CL647-27298) at dilution of 1:200.



$1 \times 10^6$  HeLa cells were intracellularly stained with 0.2 ug CoraLite® Plus 647 Anti-Human calreticulin (CL647-27298) (red), or 0.2 ug CL647-30000 Rabbit IgG (blue). Cells were fixed and permeabilized with Transcription Factor Staining Buffer Kit (PF00011).