

Nur für Forschungszwecke

Rabbit IgG control Polyklonaler Antikörper

Katalog-Nr.:CL647-30000



Allgemeine Informationen

Katalog-Nr.: CL647-30000	GenBank-Zugangsnummer: GeneID (NCBI):	Reinigungsmethode: N/A
Größe: 100ul , Konzentration: 1000 µg/ml von Nanodrop;	Vollständiger Name:	Anregungs-/Emissionsmaxima-Wellenlängen: 654 nm / 674 nm
Wirt: Kaninchen		
Isotyp: IgG		

Anwendungen

Geprüfte Anwendungen:
FC

Getestete Reaktivität:
Kaninchen

Hintergrundinformationen

This product is Normal rabbit IgG (without immunized) which purified with Protein A. Normal Rabbit IgG is an isotype control antibody, which is used to estimate the non-specific binding of target primary antibodies due to Fc receptor binding or other protein-protein interactions. An isotype control antibody should have the same immunoglobulin type and be used at the same concentration as the test antibody. This antibody can be used as Rabbit IgG control in experiments.

Lagerung

Lagerungsbedingungen:
Bei -20°C lagern. Vor Licht schützen. Nach dem Versand ein Jahr stabil.

Lagerungspuffer:
BS mit 50% Glycerin, 0,05% Proclin300, 0,5% BSA, pH 7,3.

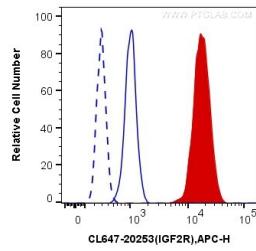
Aliquotieren ist nicht notwendig bei -20°C Lagerung

***** 20ul-Größen enthalten 0.1% BSA**

For technical support and original validation data for this product please contact:
T: 1 (888) 4PTGLAB (1-888-478-4522) (toll free in USA), or 1(312) 455-8498 (outside USA)
E: proteintech@ptglab.com
W: ptglab.com

This product is exclusively available under Proteintech Group brand and is not available to purchase from any other manufacturer.

Ausgewählte Validierungsdaten



1X10⁶ HepG2 cells were intracellularly stained with 0.4 µg CoraLite® Plus 647-conjugated Rabbit IgG control (CL647-30000) (blue, solid line) or CoraLite® Plus 647 Anti-IGF2R-Specific (CL647-20253) (red), or not stained (blank) (blue, dashed line). Cells were fixed with 4% PFA and permeabilized with Flow Cytometry Perm Buffer (PF00011-C).