

Nur für Forschungszwecke

MTCO2 Polyklonaler Antikörper

Katalog-Nr.:CL647-55070

Vorgestelltes Produkt



Allgemeine Informationen

Katalog-Nr.:

CL647-55070

Größe:

100ul , Konzentration: 1000 µg/ml von4513

Nanodrop;

Wirt:

Kaninchen

Isotyp:

IgG

GenBank-Zugangsnummer:

YP_003024029

GeneID (NCBI):

4513

Vollständiger Name:

cytochrome c oxidase II

Berechnete Masse:

26 kDa

Beobachtete Masse:

23-26 kDa

Reinigungsmethode:

Antigen-Affinitätsreinigung

Anregungs-/Emissionsmaxima-
Wellenlängen:

654 nm / 674 nm

Anwendungen

Geprüfte Anwendungen:

FC (Intra)

Getestete Reaktivität:

Human, Maus, Ratte

Hintergrundinformationen

COX2, also named as COII, COXII and MTCO2, belongs to the cytochrome c oxidase subunit 2 family. It is the component of the respiratory chain that catalyzes the reduction of oxygen to water. Subunits 1-3 form the functional core of the enzyme complex. Subunit 2 transfers the electrons from cytochrome c via its binuclear copper A center to the bimetallic center of the catalytic subunit 1. Defects in COX2 are a cause of mitochondrial complex IV deficiency (MT-C4D). The antibody is specific to COX2.

Lagerung

Lagerungsbedingungen:

Bei -20°C lagern. Vor Licht schützen. Nach dem Versand ein Jahr stabil.

Lagerungspuffer:

BS mit 50% Glycerin, 0,05% Proclin300, 0,5% BSA, pH 7,3.

Aliquotieren ist nicht notwendig bei -20°C Lagerung

*** 20ul-Größen enthalten 0.1% BSA

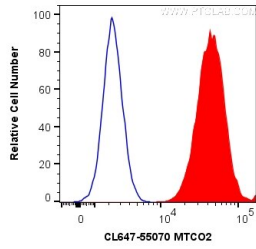
For technical support and original validation data for this product please contact:

T: 1 (888) 4PTGLAB (1-888-478-4522) (toll free
in USA), or 1(312) 455-8498 (outside USA)

E: proteintech@ptglab.com
W: ptglab.com

This product is exclusively available under Proteintech Group brand and is not available to purchase from any other manufacturer.

Ausgewählte Validierungsdaten



1X10⁶ HeLa cells were intracellularly stained with 0.2 ug Coralite® Plus 647 Anti-Human MTCO2 (CL647-55070) (red), or 0.2 ug isotype control (blue). Cells were fixed with 4% PFA and permeabilized with Flow Cytometry Perm Buffer (PF00011-C).