

Allgemeine Informationen

Katalog-Nr.: CL647-60004	GenBank-Zugangsnummer: BC004109	Reinigungsmethode: Protein-A-Reinigung
Größe: 100ul , Konzentration: 1000 µg/ml von2597 Nanodrop;	GeneID (NCBI): 2597	CloneNo.: 1E6D9
Wirt: Maus	Vollständiger Name: glyceraldehyde-3-phosphate dehydrogenase	Anregungs-/Emissionsmaxima- Wellenlängen: 654 nm / 674 nm
Isotyp: IgG2b	Berechnete Masse: 36 kDa	
Immunogen Katalognummer: AG0766	Beobachtete Masse: 36 kDa	

Anwendungen

Geprüfte Anwendungen:
FC (Intra)

Getestete Reaktivität:
Hefe, Human, Maus, Pflanze, Ratte, Zebrafisch

Hintergrundinformationen

Glyceraldehyde-3-phosphate dehydrogenase (GAPDH) catalyzes the phosphorylation of glyceraldehyde-3-phosphate during glycolysis. GAPDH participates in nuclear events including transcription, binding RNA, RNA transportation, DNA replication, DNA repair and apoptosis. Being stably and constitutively expressed at high levels in most tissues and cells, GAPDH is considered a housekeeping protein. It is widely used as a control for RT-PCR and also loading control in electrophoresis and Western blotting. GAPDH is normally expressed in cellular cytoplasm or membrane, but can occasionally translocate to the nucleus after the addition of post-translational modifications such as S-nitrosylation. This antibody is raised against full length GAPDH of human origin. It can recognize the 36 kDa GAPDH protein in most cells/tissues. In addition, a band below 36 kDa can always be detected as the isoform or spliced product of GAPDH (PMID: 23885286, 23877755, 19368702). Please note that some physiological factors, such as hypoxia and diabetes, increase GAPDH expression in certain cell types. For murine tissue samples, conjugated mouse antibody HRP-60004 and rabbit antibody 10494-1-AP are preferable.

Lagerung

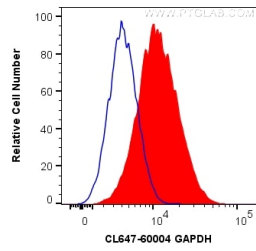
Lagerungsbedingungen:
Bei -20°C lagern. Vor Licht schützen. Nach dem Versand ein Jahr stabil.

Lagerungspuffer:
BS mit 50% Glycerin, 0,05% Proclin300, 0,5% BSA, pH 7,3.

Aliquotieren ist nicht notwendig bei -20°C Lagerung

*** 20ul-Größen enthalten 0.1% BSA

Ausgewählte Validierungsdaten



1×10^6 HeLa cells were intracellularly stained with 0.2 μ g CoraLite® Plus 647 Anti-Human GAPDH (CL647-60004, Clone:1E6D9) (red), or 0.2 μ g Control Antibody (blue). Cells were fixed with 4% PFA and permeabilized with Flow Cytometry Perm Buffer (PF00011-C).