

Nur für Forschungszwecke

Chromogranin A Monoklonaler Antikörper



Katalog-Nr.:CL647-60135

Allgemeine Informationen

Katalog-Nr.: CL647-60135	GenBank-Zugangsnummer: BC006459	Reinigungsmethode: Protein-G-Reinigung
Größe: 100ul , Konzentration: 1000 µg/ml von1113 Nanodrop;	GeneID (NCBI): von1113	CloneNo.: 3H11C11
Wirt: Maus	Vollständiger Name: chromogranin A (parathyroid secretory protein 1)	Empfohlene Verdünnungen: IF 1:50-1:500
Isotyp: IgG1	Berechnete Masse: 51 kDa	Anregungs-/Emissionsmaxima- Wellenlängen: 654 nm / 674 nm
Immunogen Katalognummer: AG0807		

Anwendungen

Geprüfte Anwendungen: FC (Intra), IF	Positivkontrollen: IF : PC-12-Zellen, SH-SY5Y-Zellen
Getestete Reaktivität: Hausschwein, Human, Maus, Ratte	

Hintergrundinformationen

Chromogranin A is a member of the granin family of neuroendocrine secretory proteins. It is located in secretory vesicles of neurons and endocrine cells. Chromogranin A is the precursor to several functional peptides including vasostatin, pancreastatin, catestatin and parastatin. These peptides negatively modulate the neuroendocrine function of the releasing cell (autocrine) or nearby cells (paracrine). CgA is one of the most used tumor markers in NET's (neuroendocrine tumors), and elevated CgA concentrations have been demonstrated in serum or plasma of patients with different types of these tumors.

Lagerung

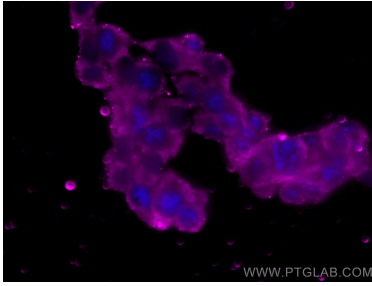
Lagerungsbedingungen:
Bei -20°C lagern. Vor Licht schützen. Nach dem Versand ein Jahr stabil.
Lagerungspuffer:
BS mit 50% Glycerin, 0,05% Proclin300, 0,5% BSA, pH 7,3.
Aliquotieren ist nicht notwendig bei -20°C Lagerung

***** 20ul-Größen enthalten 0.1% BSA**

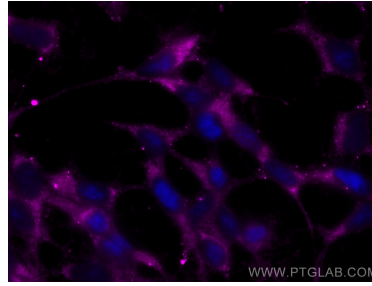
For technical support and original validation data for this product please contact:
T: 1 (888) 4PTGLAB (1-888-478-4522) (toll free in USA), or 1(312) 455-8498 (outside USA)
E: proteintech@ptglab.com
W: ptglab.com

This product is exclusively available under Proteintech Group brand and is not available to purchase from any other manufacturer.

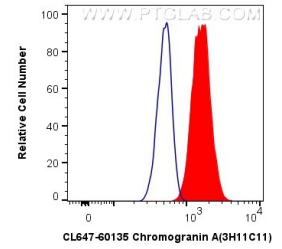
Ausgewählte Validierungsdaten



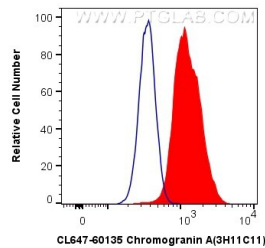
Immunofluorescent analysis of (-20°C Ethanol) fixed PC-12 cells using CoraLite® Plus 647 Chromogranin A antibody (CL647-60135, Clone: 3H11C11) at dilution of 1:200.



Immunofluorescent analysis of (-20°C Ethanol) fixed SH-SY5Y cells using CoraLite® Plus 647 Chromogranin A antibody (CL647-60135, Clone: 3H11C11) at dilution of 1:200.



1X10⁶ Neuro-2a cells were intracellularly stained with 0.8 ug CoraLite® Plus 647 Anti-Human Chromogranin A (CL647-60135, Clone:3H11C11) (red), or 0.8 ug Control Antibody. Cells were fixed with 4% PFA and permeabilized with Flow Cytometry Perm Buffer (PF00011-C).



1X10⁶ SH-SY5Y cells were intracellularly stained with 0.8 ug CoraLite® Plus 647 Anti-Human Chromogranin A (CL647-60135, Clone:3H11C11) (red), or 0.8 ug Control Antibody. Cells were fixed with 4% PFA and permeabilized with Flow Cytometry Perm Buffer (PF00011-C).