

Nur für Forschungszwecke

CD20 Monoklonaler Antikörper

Katalog-Nr.:CL647-60271



Allgemeine Informationen

Katalog-Nr.: CL647-60271	GenBank-Zugangsnummer: BC002807	Reinigungsmethode: Protein-A-Reinigung
Größe: 100ul , Konzentration: 1000 µg/ml von931 Nanodrop;	GeneID (NCBI): 4A7G3	CloneNo.: 4A7G3
Wirt: Maus	Vollständiger Name: membrane-spanning 4-domains, subfamily A, member 1	Empfohlene Verdünnungen: IF 1:50-1:500
Isotyp: IgG2b	Berechnete Masse: 297 aa, 33 kDa	Anregungs-/Emissionsmaxima- Wellenlängen: 654 nm / 674 nm
Immunogen Katalognummer: AG17309		

Anwendungen

Geprüfte Anwendungen: FC (Intra), IF	Positivkontrollen: IF : humanes Tonsillitisgewebe, humanes Lungenkarzinomgewebe
Getestete Reaktivität: Human	

Hintergrundinformationen

CD20 is a 33-37 kDa transmembrane phosphoprotein. CD20 is a B-lymphocyte surface molecule that is widely expressed during B-cell ontogeny, from early pre-B-cell developmental stages until final differentiation into plasma cells. CD20 functions as calcium-permeable cation channel. It is involved in the regulation of B-cell activation and proliferation. CD20 serves as a useful target for antibody-mediated therapeutic depletion of B-cells.

Lagerung

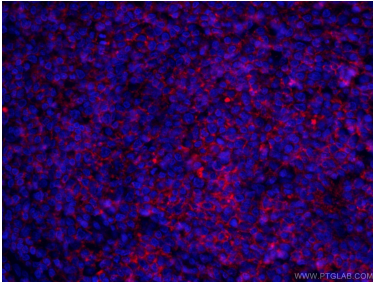
Lagerungsbedingungen:
Bei -20°C lagern. Vor Licht schützen. Nach dem Versand ein Jahr stabil.
Lagerungspuffer:
BS mit 50% Glycerin, 0,05% Proclin300, 0,5% BSA, pH 7,3.
Aliquotieren ist nicht notwendig bei -20°C Lagerung

*** 20ul-Größen enthalten 0.1% BSA

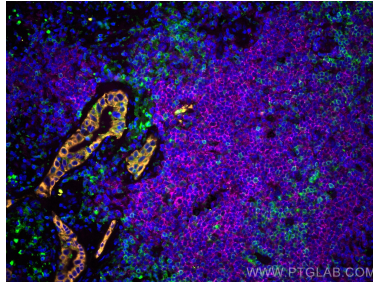
For technical support and original validation data for this product please contact:
T: 1 (888) 4PTGLAB (1-888-478-4522) (toll free in USA), or 1(312) 455-8498 (outside USA)
E: proteintech@ptglab.com
W: ptglab.com

This product is exclusively available under Proteintech Group brand and is not available to purchase from any other manufacturer.

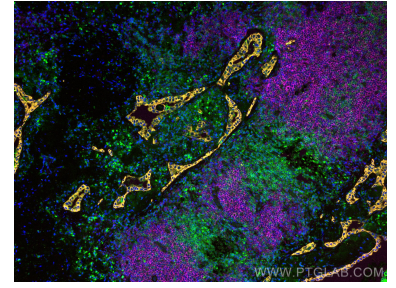
Ausgewählte Validierungsdaten



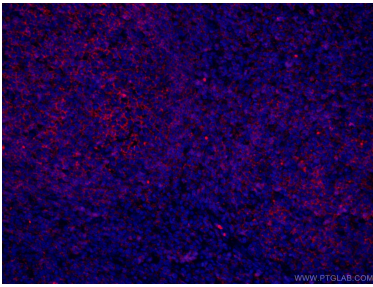
Immunofluorescent analysis of (4% PFA) fixed human tonsillitis tissue using CL647-60271 (CD20 antibody) at dilution of 1:100 and CoraLite488-Conjugated AffiniPure Goat Anti-Mouse IgG(H+L).



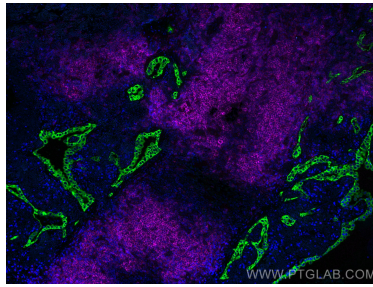
Immunofluorescent analysis of (4% PFA) fixed human lung cancer tissue using CoraLite® Plus 647 CD20 antibody (CL647-60271, Clone: 4A7G3) at dilution of 1:100, CoraLite®488 CD3 antibody (CL488-60181, Clone: 3F3A1, green), CoraLite®555 pan-keratin antibody (CL555-26411, orange).



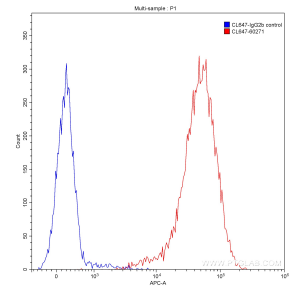
Immunofluorescent analysis of (4% PFA) fixed human lung cancer tissue using CoraLite® Plus 647 CD20 antibody (CL647-60271, Clone: 4A7G3) at dilution of 1:100, CoraLite®488 CD3 antibody (CL488-60181, Clone: 3F3A1, green), CoraLite®555 pan-keratin antibody (CL555-26411, orange).



Immunofluorescent analysis of (4% PFA) fixed human tonsillitis tissue using CL647-60271 (CD20 antibody) at dilution of 1:100 and CoraLite488-Conjugated AffiniPure Goat Anti-Mouse IgG(H+L).



Immunofluorescent analysis of (4% PFA) fixed human lung cancer tissue using CoraLite® Plus 647 CD20 antibody (CL647-60271, Clone: 4A7G3) at dilution of 1:100, CoraLite®488 pan-keratin antibody (CL488-26411, green).



1X10⁶ Raji cells were stained with 0.20 ug CoraLite® Plus 647-conjugated Anti-Human CD20 (CL647-60271, Clone:4A7G3) (red) or 0.20 ug control antibody (blue). Fixed with90% MeOH.