

Nur für Forschungszwecke

CD103 Monoklonaler Antikörper

Katalog-Nr.:CL647-65047



Allgemeine Informationen

Katalog-Nr.: CL647-65047	GenBank-Zugangsnummer: BC150690	Reinigungsmethode: Affinitätsreinigung
Größe: 100tests , 5 µl/test	GeneID (NCBI): 16407	CloneNo.: 2E7
Wirt: hamster	Vollständiger Name: integrin alpha E, epithelial-associated	Anregungs-/Emissionsmaxima-Wellenlängen: 654 nm / 674 nm
Isotyp: IgG		

Anwendungen

Geprüfte Anwendungen:
FC
Getestete Reaktivität:
Maus

Hintergrundinformationen

CD103, also known as integrin alpha-E (ITGAE) or integrin alpha-IEL, is a type I transmembrane integrin protein that binds integrin beta 7 to form Integrin alpha-E beta-7 which is a receptor for E-cadherin and mediates adhesion of T lymphocytes to epithelial cells (PMID: 7969453; 8468482). CD103 is expressed on intraepithelial lymphocyte (IEL) T cells (both alpha/beta T cells and gamma/delta T cells), some peripheral regulatory T cells (Tregs), lamina propria T cells, and a subset of dendritic cells in the gut mucosa and mesenteric lymph nodes (PMID: 12242333; 15608520; 16216890).

Lagerung

Lagerungsbedingungen:
Store at 2-8°C. Avoid exposure to light. Stable for one year after shipment.
Lagerungspuffer:
PBS mit 0,1% Natriumazid und 0,5% BSA, pH 7,3.

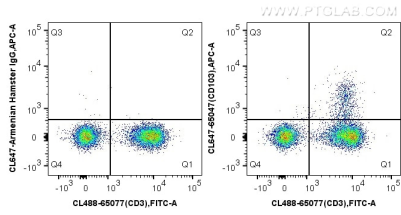
For technical support and original validation data for this product please contact:

T: 1 (888) 4PTGLAB (1-888-478-4522) (toll free in USA), or 1(312) 455-8498 (outside USA)

E: proteintech@ptglab.com
W: ptglab.com

This product is exclusively available under Proteintech Group brand and is not available to purchase from any other manufacturer.

Ausgewählte Validierungsdaten



1×10^6 BALB/c mouse splenocytes were surface stained with 5 μ l CoraLite® 488 Anti-Mouse CD3 (CL488-65077, Clone: 17A2) and CoraLite® Plus 647-conjugated Armenian Hamster IgG isotype control (left) or 5 μ l CoraLite® Plus 647 Anti-Mouse CD103 (CL647-65047, Clone: 2E7) (right). Cells were not fixed.