

Nur für Forschungszwecke

CD16/32 Monoklonaler Antikörper

Katalog-Nr.:CL647-65057



Allgemeine Informationen

Katalog-Nr.: CL647-65057	GenBank-Zugangsnummer: BC038070	Reinigungsmethode: Affinitätsreinigung
Größe: 100tests , 5 µl/test	GeneID (NCBI): 14130	CloneNo.: 93
Wirt: Ratte	Vollständiger Name: Fc receptor, IgG, low affinity IIb	Empfohlene Verdünnungen: IF 1:50-1:500
Isotyp: IgG2a, lambda		Anregungs-/Emissionsmaxima-Wellenlängen: 650 nm / 665 nm

Anwendungen

Geprüfte Anwendungen: FC, IF	Positivkontrollen: IF : Maus-Splenozyten,
Getestete Reaktivität: Maus	

Hintergrundinformationen

CD16 (FcγRIII) is a 50-70 kDa low affinity Fc receptor found on the surface of natural killer cells, neutrophil polymorphonuclear leukocytes, monocytes and macrophages. CD16 mediates antibody-dependent cellular cytotoxicity (ADCC) and other antibody-dependent responses, such as phagocytosis. CD32 (FcγRII) is a 40 kD transmembrane glycoprotein that binds to the Fc region of IgG with low affinity. CD32 is present on phagocytic cells such as macrophages and neutrophils, and is involved in the process of phagocytosis and clearing of immune complexes.

Lagerung

Lagerungsbedingungen:
Store at 2-8°C. Avoid exposure to light. Stable for one year after shipment.
Lagerungspuffer:
PBS mit 0,1% Natriumazid und 0,5% BSA, pH 7,3.

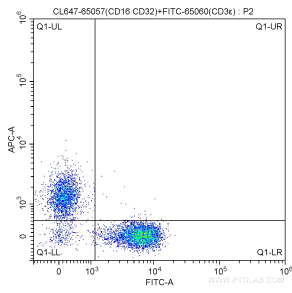
For technical support and original validation data for this product please contact:

T: 1 (888) 4PTGLAB (1-888-478-4522) (toll free in USA), or 1(312) 455-8498 (outside USA)

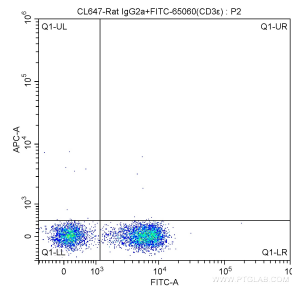
E: proteintech@ptglab.com
W: ptglab.com

This product is exclusively available under Proteintech Group brand and is not available to purchase from any other manufacturer.

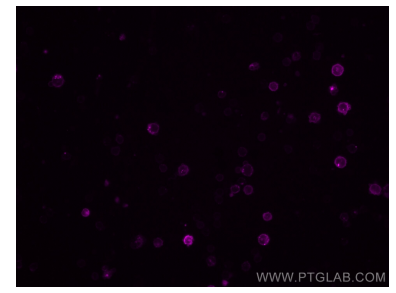
Ausgewählte Validierungsdaten



1X10⁶ mouse splenocytes were surface stained with FITC Anti-Mouse CD3ε (FITC-65060, Clone: 145-2C11) and 5 ul CoraLite® Plus 647 Anti-Mouse CD16/32 (CL647-65057, Clone: 93). Cells were not fixed.



1X10⁶ mouse splenocytes were surface stained with FITC Anti-Mouse CD3ε (FITC-65060, Clone: 145-2C11) and CoraLite® Plus 647 conjugated Rat IgG2a isotype control. Cells were not fixed.



Immunofluorescent analysis of mouse splenocytes using CoraLite® Plus 647 CD16/32 antibody (CL647-65057, Clone: 93) at dilution of 1:100.