

Nur für Forschungszwecke

CD31 Monoklonaler Antikörper

Katalog-Nr.:CL647-65058



Allgemeine Informationen

Katalog-Nr.: CL647-65058	GenBank-Zugangsnummer: BC008519	Reinigungsmethode: Affinitätsreinigung
Größe: 100tests , 5 µl/test	GeneID (NCBI): 18613	CloneNo.: 390
Wirt: Ratte	Vollständiger Name: platelet/endothelial cell adhesion molecule 1	Empfohlene Verdünnungen: IF 1:50-1:500
Isotyp: IgG2a		Anregungs-/Emissionsmaxima-Wellenlängen: 654 nm / 674 nm

Anwendungen

Geprüfte Anwendungen: IF,FC	Positivkontrollen: IF : bEnd.3-Zellen,
Getestete Reaktivität: Maus	

Hintergrundinformationen

Platelet endothelial cell adhesion molecule-1 (PECAM-1, CD31) is a member of the immunoglobulin gene superfamily of cell adhesion molecules. CD31 is a transmembrane glycoprotein that is highly expressed on the surface of the endothelium, making up a large portion of its intracellular junctions. PECAM-1 is also present on the surface of hematopoietic cells and immune cells including platelets, monocytes, neutrophils, natural killer cells, megakaryocytes and some types of T-cell (PMID: 9011572). As well as its role in cell-cell adhesion, PECAM-1 functions as a signaling receptor, and is involved in important physiological events such as nitric oxide production, regulation of T-cell immunity and tolerance, leukocyte transendothelial migration and inflammation and angiogenesis (PMID: 21183735; 20978210; 17872453; 20634489).

Lagerung

Lagerungsbedingungen:
Bei 2-8°C lagern. Vor Licht schützen.
Lagerungspuffer:
PBS mit 0,1% Natriumazid und 0,5% BSA, pH 7,3.

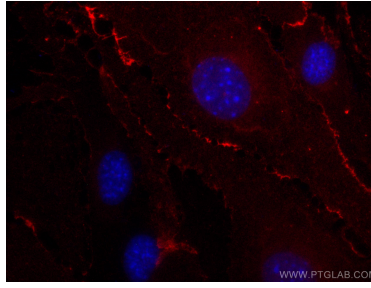
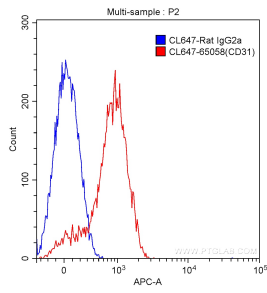
For technical support and original validation data for this product please contact:

T: 1 (888) 4PTGLAB (1-888-478-4522) (toll free in USA), or 1(312) 455-8498 (outside USA)

E: proteintech@ptglab.com
W: ptglab.com

This product is exclusively available under Proteintech Group brand and is not available to purchase from any other manufacturer.

Ausgewählte Validierungsdaten



1X10⁶ C57BL/6 mouse splenocytes were surface stained with 5.00 ul/test CoraLite® Plus 647-conjugated Anti-Mouse CD31 (CL647-65058, Clone: 390) (red) or isotype control antibody (blue). Cells were not fixed.

Immunofluorescent analysis of (4% PFA) fixed bEnd.3 cells using CoraLite® Plus 647 CD31 antibody (CL647-65058, Clone: 390) at dilution of 1:100.