

Nur für Forschungszwecke

CD38 Monoklonaler Antikörper

Katalog-Nr.:CL647-65059



Allgemeine Informationen

Katalog-Nr.: CL647-65059	GenBank-Zugangsnummer: BC046312	Reinigungsmethode: Affinitätsreinigung
Größe: 100tests , 5 µl/test	GeneID (NCBI): 12494	CloneNo.: 90
Wirt: Ratte	Vollständiger Name: CD38 antigen	Empfohlene Verdünnungen: IF 1:200-1:800
Isotyp: IgG2a, kappa		Anregungs-/Emissionsmaxima-Wellenlängen: 654 nm / 674 nm

Anwendungen

Geprüfte Anwendungen: FC, IF	Positivkontrollen: IF : Maus-Splenozyten,
Getestete Reaktivität: Maus	

Hintergrundinformationen

CD38, also known as ADP-ribosyl cyclase 1, is a type II transmembrane glycoprotein with a short N-terminal cytoplasmic tail, a single membrane-spanning domain, and a C-terminal extracellular region with four N-glycosylation sites (PMID: 2319135). The extracellular domain of CD38 has bifunctional enzyme activities that catalyze synthesis of cyclic ADP ribose from nicotinamide adenine dinucleotide (NAD) and hydrolysis of cyclic ADP ribose to adenosine diphosphoribose (PMID: 10636863). CD38 is expressed on a variety of hematopoietic and non-hematopoietic cells and is involved in diverse processes such as generation of calcium-mobilizing metabolites, cell activation, and chemotaxis (PMID: 25938500).

Lagerung

Lagerungsbedingungen:
Store at 2-8°C. Avoid exposure to light. Stable for one year after shipment.
Lagerungspuffer:
PBS mit 0,1% Natriumazid und 0,5% BSA, pH 7,3.

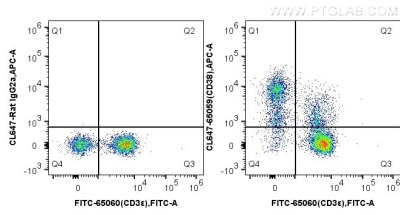
For technical support and original validation data for this product please contact:

T: 1 (888) 4PTGLAB (1-888-478-4522) (toll free in USA), or 1(312) 455-8498 (outside USA)

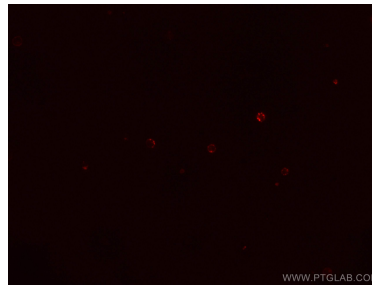
E: proteintech@ptglab.com
W: ptglab.com

This product is exclusively available under Proteintech Group brand and is not available to purchase from any other manufacturer.

Ausgewählte Validierungsdaten



1X10⁶ mouse splenocytes were surface stained with FITC Anti-Mouse CD3 ϵ (FITC-65060, Clone: 145-2C11) and CoraLite[®] Plus 647-conjugated Rat IgG2a isotype control (left) or 5.00 μ l CoraLite[®] Plus 647-conjugated Anti-Mouse CD38 (CL647-65059, Clone: 90) (right). Cells were not fixed.



Immunofluorescent analysis of mouse splenocytes using CoraLite[®] Plus 647-conjugated Anti-Mouse CD38 (CL647-65059, Clone: 90) at dilution of 1:400.