

Nur für Forschungszwecke

CD3 ϵ Monoklonaler Antikörper

Katalog-Nr.:CL647-65061



Allgemeine Informationen

Katalog-Nr.: CL647-65061	GenBank-Zugangsnummer: BC098236	Reinigungsmethode: Affinitätsreinigung
Größe: 100tests , 5 μ l/test	GeneID (NCBI): 12501	CloneNo.: 500-A2
Wirt: hamster	Vollständiger Name: CD3 antigen, epsilon polypeptide	Empfohlene Verdünnungen: IF 1:250-1:1000
Isotyp: IgG		Anregungs-/Emissionsmaxima-Wellenlängen: 654 nm / 674 nm

Anwendungen

Geprüfte Anwendungen: FC, IF	Positivkontrollen: IF : Maus-Splenozyten,
Getestete Reaktivität: Maus	

Hintergrundinformationen

CD3 is a multimeric protein associated with the T-cell receptor (TCR) to form a complex involved in antigen recognition and signal transduction (PMID: 15885124). CD3 is composed of CD3 γ , δ , ϵ , and ζ chains (PMID: 1826255). It is expressed by thymocytes in a developmentally regulated manner, T cells, and some NK cells (PMID: 3289580). The TCR recognizes antigens bound to major histocompatibility complex (MHC) molecules. TCR-mediated peptide-MHC recognition is transmitted to the CD3 complex, leading to the intracellular signal transduction (PMID: 11985657).

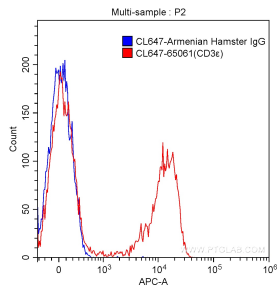
Lagerung

Lagerungsbedingungen:
Store at 2-8°C. Avoid exposure to light. Stable for one year after shipment.
Lagerungspuffer:
PBS mit 0,1% Natriumazid und 0,5% BSA, pH 7,3.

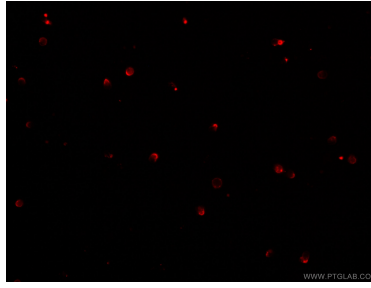
For technical support and original validation data for this product please contact:
T: 1 (888) 4PTGLAB (1-888-478-4522) (toll free in USA), or 1(312) 455-8498 (outside USA)
E: proteintech@ptglab.com
W: ptglab.com

This product is exclusively available under Proteintech Group brand and is not available to purchase from any other manufacturer.

Ausgewählte Validierungsdaten



1×10^6 C57BL/6 mouse splenocytes were surface stained with 5.00 μ l CoraLite® Plus 647-conjugated Anti-Mouse CD3 ϵ (CL647-65061, Clone: 500-A2) (red) or isotype control antibody (blue). Cells were not fixed.



Immunofluorescent analysis of mouse splenocytes using CoraLite® Plus 647-conjugated Anti-Mouse CD3 ϵ (CL647-65061, Clone: 500-A2) at dilution of 1:500.