

Nur für Forschungszwecke

CD8a Monoklonaler Antikörper

Katalog-Nr.:CL647-65069



Allgemeine Informationen

Katalog-Nr.: CL647-65069	GenBank-Zugangsnummer: BC030679	Reinigungsmethode: Affinitätsreinigung
Größe: 100ug, 0.5 mg/ml	GeneID (NCBI): 12525	CloneNo.: 53-6.7
Wirt: Ratte	Vollständiger Name: CD8 antigen, alpha chain	Empfohlene Verdünnungen: IF 1:250-1:1000
Isotyp: IgG2a, kappa		Anregungs-/Emissionsmaxima-Wellenlängen: 654 nm / 674 nm

Anwendungen

Geprüfte Anwendungen: FC, IF	Positivkontrollen: IF : Maus-Splenozyten,
Getestete Reaktivität: Maus	

Hintergrundinformationen

CD8 is a transmembrane glycoprotein composed of two disulfide-linked chains. It can be present as a homodimer of CD8a or as a heterodimer of CD8a and CD8β (PMID: 3264320; 8253791). CD8 is found on most thymocytes. The majority of class I-restricted T cells express mostly the CD8aβ heterodimer while CD8aa homodimers alone have been found on some gut intraepithelial T cells, on some T cell receptor (TCR) γδ T cells and on NK cells (PMID: 2111591; 1831127; 8420975). CD8 acts as a co-receptor that binds to MHC class-I and participates in cytotoxic T cell activation (PMID: 8499079). During T cell development, CD8 is required for positive selection of CD4-/CD8+ T cells (PMID: 1968084).

Lagerung

Lagerungsbedingungen:
Store at 2-8°C. Avoid exposure to light. Stable for one year after shipment.
Lagerungspuffer:
PBS with 0.09% sodium azide.

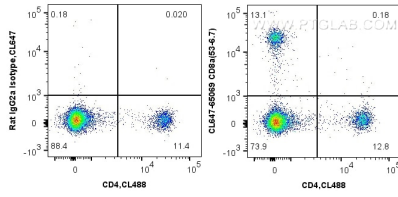
For technical support and original validation data for this product please contact:

T: 1 (888) 4PTGLAB (1-888-478-4522) (toll free in USA), or 1(312) 455-8498 (outside USA)

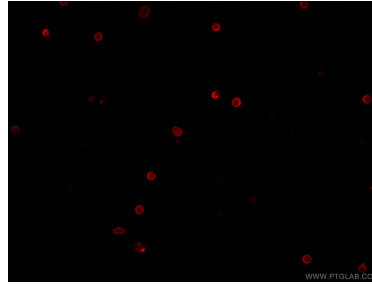
E: proteintech@ptglab.com
W: ptglab.com

This product is exclusively available under Proteintech Group brand and is not available to purchase from any other manufacturer.

Ausgewählte Validierungsdaten



1x10⁶ mouse splenocytes were surface stained with CoraLite® 488 Anti-Mouse CD4 (CL488-65104, Clone: GK1.5) and 0.25 µg CoraLite® Plus 647 Anti-Mouse CD8a (CL647-65069, Clone: 53-6.7) or CoraLite® Plus 647-Conjugated rat IgG2a isotype control. Cells were not fixed.



Immunofluorescent analysis of mouse splenocytes using CoraLite® Plus 647-conjugated Anti-Mouse CD8a (CL647-65069, Clone: 53-6.7) at dilution of 1:500.