

Nur für Forschungszwecke

# CD3 Monoklonaler Antikörper

Katalog-Nr.:CL647-65077



## Allgemeine Informationen

<b>Katalog-Nr.:</b> CL647-65077	<b>GenBank-Zugangsnummer:</b> BC098236	<b>Reinigungsmethode:</b> Affinitätsreinigung
<b>Größe:</b> 100tests , 5 µl/test	<b>GeneID (NCBI):</b> 12501	<b>CloneNo.:</b> 17A2
<b>Wirt:</b> Ratte	<b>Vollständiger Name:</b> CD3 antigen, epsilon polypeptide	<b>Empfohlene Verdünnungen:</b> IF 1:250-1:1000
<b>Isotyp:</b> IgG2b, kappa		<b>Anregungs-/Emissionsmaxima-Wellenlängen:</b> 654 nm / 674 nm

## Anwendungen

<b>Geprüfte Anwendungen:</b> FC, IF	<b>Positivkontrollen:</b> IF : Maus-Splenozyten,
<b>Getestete Reaktivität:</b> Maus	

## Hintergrundinformationen

CD3 is a multimeric protein associated with the T-cell receptor (TCR) to form a complex involved in antigen recognition and signal transduction (PMID: 15885124). CD3 is composed of CD3 $\gamma$ ,  $\delta$ ,  $\epsilon$ , and  $\zeta$  chains (PMID: 1826255). It is expressed by thymocytes in a developmentally regulated manner, T cells, and some NK cells (PMID: 3289580). The TCR recognizes antigens bound to major histocompatibility complex (MHC) molecules. TCR-mediated peptide-MHC recognition is transmitted to the CD3 complex, leading to the intracellular signal transduction (PMID: 11985657).

## Lagerung

**Lagerungsbedingungen:**  
Store at 2-8°C. Avoid exposure to light. Stable for one year after shipment.  
**Lagerungspuffer:**  
PBS mit 0,1% Natriumazid und 0,5% BSA, pH 7,3.

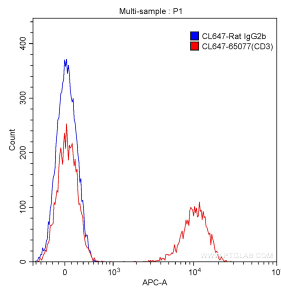
For technical support and original validation data for this product please contact:

T: 1 (888) 4PTGLAB (1-888-478-4522) (toll free in USA), or 1(312) 455-8498 (outside USA)

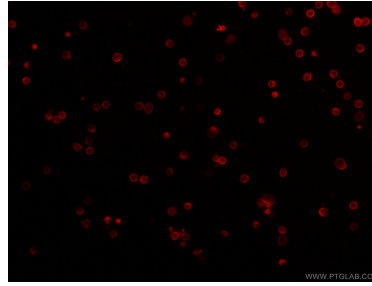
E: [proteintech@ptglab.com](mailto:proteintech@ptglab.com)  
W: [ptglab.com](http://ptglab.com)

**This product is exclusively available under Proteintech Group brand and is not available to purchase from any other manufacturer.**

## Ausgewählte Validierungsdaten



1x10<sup>6</sup> C57BL/6 mouse splenocytes were surface stained with 5.00 ul/test CoraLite® Plus 647-conjugated Anti-Mouse CD3 (CL647-65077, Clone: 17A2) (red) or isotype control antibody (blue). Cells were not fixed.



Immunofluorescent analysis of mouse splenocytes using CoraLite® Plus 647-conjugated Anti-Mouse CD3 (CL647-65077, Clone: 17A2) at dilution of 1:500.