

Nur für Forschungszwecke

CD16 / CD32 Monoklonaler Antikörper

Katalog-Nr.: CL647-65080



Allgemeine Informationen

Katalog-Nr.: CL647-65080	GenBank-Zugangsnummer: BC038070	Reinigungsmethode: Affinitätsreinigung
Größe: 100tests, 5 µl/test	GeneID (NCBI): 14130	CloneNo.: 2.4G2
Wirt: Ratte	Vollständiger Name: Fc receptor, IgG, low affinity IIb	Anregungs-/Emissionsmaxima-Wellenlängen: 654 nm / 674 nm
Isotyp: IgG2b		

Anwendungen

Geprüfte Anwendungen:
FC
Getestete Reaktivität:
Maus

Hintergrundinformationen

CD16 (FcγRIII) is a 50-70 kDa low affinity Fc receptor found on the surface of natural killer cells, neutrophil polymorphonuclear leukocytes, monocytes and macrophages. CD16 mediates antibody-dependent cellular cytotoxicity (ADCC) and other antibody-dependent responses, such as phagocytosis. CD32 (FcγRII) is a 40 kD transmembrane glycoprotein that binds to the Fc region of IgG with low affinity. CD32 is present on phagocytic cells such as macrophages and neutrophils, and is involved in the process of phagocytosis and clearing of immune complexes. The 2.4G2 antibody reacts with the extracellular domains of mouse CD16 (FcRIII) and CD32 (FcRII) (PMID: 90108; 8406898).

Lagerung

Lagerungsbedingungen:
Bei 2-8°C lagern. Vor Licht schützen.
Lagerungspuffer:
PBS mit 0,1% Natriumazid und 0,5% BSA, pH 7,3.

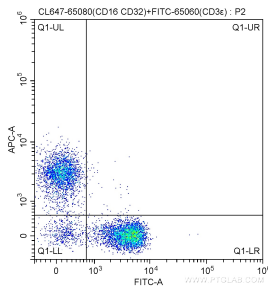
For technical support and original validation data for this product please contact:

T: 1 (888) 4PTGLAB (1-888-478-4522) (toll free in USA), or 1(312) 455-8498 (outside USA)

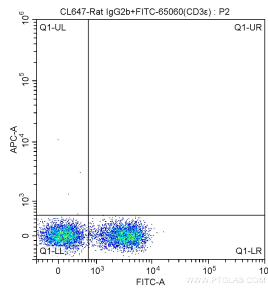
E: proteintech@ptglab.com
W: ptglab.com

This product is exclusively available under Proteintech Group brand and is not available to purchase from any other manufacturer.

Ausgewählte Validierungsdaten



1X10⁶ C57BL/6 mouse splenocytes were surface stained with FITC-Anti-Mouse CD3ε (FITC-65060, Clone: 145-2C11) and 5 ul CoraLite® Plus 647-conjugated Anti-Mouse CD16 / CD32 (CL647-65080, Clone: 2.4G2). Cells were not fixed.



1X10⁶ C57BL/6 mouse splenocytes were surface stained with FITC-Anti-Mouse CD3ε (FITC-65060, Clone: 145-2C11) and CoraLite® Plus 647-conjugated Rat IgG2b isotype control antibody. Cells were not fixed.