

Nur für Forschungszwecke

# CD25 Monoklonaler Antikörper

Katalog-Nr.:CL647-65096



## Allgemeine Informationen

<b>Katalog-Nr.:</b> CL647-65096	<b>GenBank-Zugangsnummer:</b> BC156627	<b>Reinigungsmethode:</b> Affinitätsreinigung
<b>Größe:</b> 100tests , 5 µl/test	<b>GeneID (NCBI):</b> 3559	<b>CloneNo.:</b> BC96
<b>Wirt:</b> Maus	<b>Vollständiger Name:</b> interleukin 2 receptor, alpha	<b>Anregungs-/Emissionsmaxima-Wellenlängen:</b> 654 nm / 674 nm
<b>Isotyp:</b> IgG1	<b>Berechnete Masse:</b> 272 aa, 31 kDa	

## Anwendungen

**Geprüfte Anwendungen:**  
FC

**Getestete Reaktivität:**  
Human

## Hintergrundinformationen

Proliferation of T lymphocytes is triggered by the interaction of IL-2 with its specific receptor following T lymphocyte activation. The receptor for IL-2 has three forms, generated by different combinations of three different proteins, the alpha chain (IL-2R alpha), the beta chain (IL-2R beta), and the gamma chain (IL-2R gamma) (PMID: 8476561). IL-2R alpha (also known as CD25) is a type I transmembrane protein present on activated T cells, activated B cells, some thymocytes, myeloid precursors, and oligodendrocytes. CD25 is also found on natural CD4+Foxp3+ Treg cells and a subset of human CD4+ memory T cells (PMID: 22585674).

## Lagerung

**Lagerungsbedingungen:**  
Bei 2-8°C lagern. Vor Licht schützen.

**Lagerungspuffer:**  
PBS mit 0,1% Natriumazid und 0,5% BSA, pH 7,3.

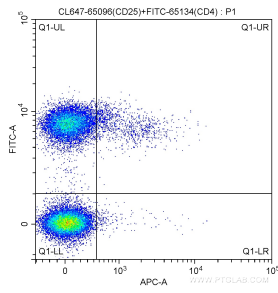
For technical support and original validation data for this product please contact:

T: 1 (888) 4PTGLAB (1-888-478-4522) (toll free in USA), or 1(312) 455-8498 (outside USA)

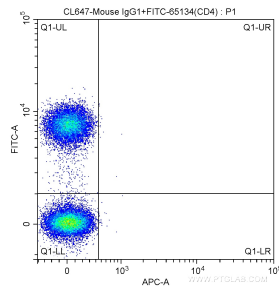
E: [proteintech@ptglab.com](mailto:proteintech@ptglab.com)  
W: [ptglab.com](http://ptglab.com)

**This product is exclusively available under Proteintech Group brand and is not available to purchase from any other manufacturer.**

## Ausgewählte Validierungsdaten



1X10<sup>6</sup> human peripheral blood mononuclear cells (PBMCs) were surface stained with FITC Anti-Human CD4 (FITC-65134, Clone: OKT4) and 5.00 ul CoraLite® Plus 647-conjugated Anti-Human CD25 (CL647-65096, Clone: BC96). Cells were not fixed.



1X10<sup>6</sup> human peripheral blood mononuclear cells (PBMCs) were surface stained with FITC Anti-Human CD4 (FITC-65134, Clone: OKT4) and CoraLite® Plus 647-conjugated Mouse IgG1 isotype control antibody. Cells were not fixed.