

Nur für Forschungszwecke

CD45 Monoklonaler Antikörper

Katalog-Nr.:CL647-65109



Allgemeine Informationen

Katalog-Nr.:

CL647-65109

Größe:

100tests , 5 µl/test

Wirt:

Maus

Isotyp:

IgG1, kappa

GenBank-Zugangsnummer:

BC014239

GeneID (NCBI):

5788

Vollständiger Name:

protein tyrosine phosphatase,
receptor type, C

Reinigungsmethode:

Affinitätsreinigung

CloneNo.:

HI30

Empfohlene Verdünnungen:

IF 1:50-1:500

**Anregungs-/Emissionsmaxima-
Wellenlängen:**

654 nm / 674 nm

Anwendungen

Geprüfte Anwendungen:

FC, IF

Getestete Reaktivität:

Human

Positivkontrollen:

IF : Jurkat-Zellen,

Hintergrundinformationen

CD45, also known as protein tyrosine phosphatase, receptor type C, is a type I transmembrane protein expressed on the surface of all haematopoietic cells with the exception of erythrocytes and platelets (PMID: 3489673; 28615666). CD45 is a pan-haematopoietic cell marker and has been shown to be essential for T- and B-cell activation and signalling (PMID: 9429890; 16378097).

Lagerung

Lagerungsbedingungen:

Store at 2-8°C. Avoid exposure to light. Stable for one year after shipment.

Lagerungspuffer:

PBS mit 0,1% Natriumazid und 0,5% BSA, pH 7,3.

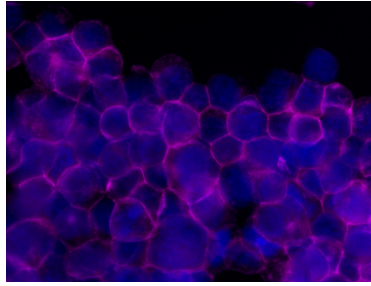
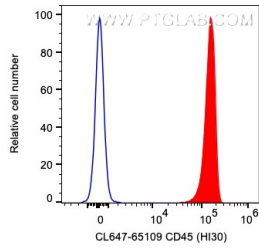
For technical support and original validation data for this product please contact:

T: 1 (888) 4PTGLAB (1-888-478-4522) (toll free
in USA), or 1(312) 455-8498 (outside USA)

E: proteintech@ptglab.com
W: ptglab.com

This product is exclusively available under Proteintech Group brand and is not available to purchase from any other manufacturer.

Ausgewählte Validierungsdaten



1×10^6 human PBMCs were surface stained with 5 μ l CoraLite® Plus 647 Anti-Human CD45 (CL647-65109, Clone: HI30), or Mouse IgG1 Isotype Control. Cells were not fixed. Lymphocytes were gated.

Immunofluorescent analysis of (4% PFA) fixed Jurkat cells using CoraLite® Plus 647 CD45 antibody (CL647-65109, Clone: HI30) at dilution of 1:200.