

Nur für Forschungszwecke

# CD161 Monoklonaler Antikörper

Katalog-Nr.:CL647-65115



## Allgemeine Informationen

<b>Katalog-Nr.:</b> CL647-65115	<b>GenBank-Zugangsnummer:</b> BC114516	<b>Reinigungsmethode:</b> Affinitätsreinigung
<b>Größe:</b> 100tests , 5 µl/test	<b>GeneID (NCBI):</b> 3820	<b>CloneNo.:</b> HP-3G10
<b>Wirt:</b> Maus	<b>Vollständiger Name:</b> killer cell lectin-like receptor subfamily B, member 1	<b>Anregungs-/Emissionsmaxima- Wellenlängen:</b> 654 nm / 674 nm
<b>Isotyp:</b> IgG1, kappa	<b>Berechnete Masse:</b> 225 aa, 25 kDa	

## Anwendungen

**Geprüfte Anwendungen:**  
FC

**Getestete Reaktivität:**  
Human

## Hintergrundinformationen

### Lagerung

**Lagerungsbedingungen:**  
Store at 2-8°C. Avoid exposure to light. Stable for one year after shipment.

**Lagerungspuffer:**  
PBS mit 0,1% Natriumazid und 0,5% BSA, pH 7,3.

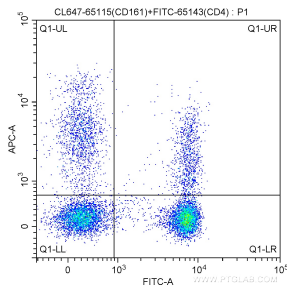
For technical support and original validation data for this product please contact:

T: 1 (888) 4PTGLAB (1-888-478-4522) (toll free  
in USA), or 1(312) 455-8498 (outside USA)

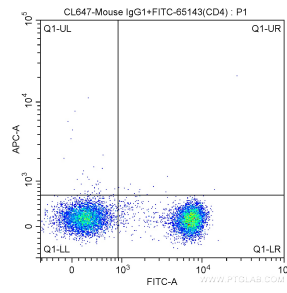
E: [proteintech@ptglab.com](mailto:proteintech@ptglab.com)  
W: [ptglab.com](http://ptglab.com)

**This product is exclusively available under Proteintech Group brand and is not available to purchase from any other manufacturer.**

## Ausgewählte Validierungsdaten



100 ul human peripheral blood were surface stained with FITC-Anti-Human CD4 (FITC-65143, Clone: RPA-T4) and 5.00 ul CoraLite® Plus 647-conjugated Anti-Human CD161 (CL647-65115, Clone:HP-3G10). Lymphocytes were gated for analysis. Cells were not fixed.



100 ul human peripheral blood were surface stained with FITC-Anti-Human CD4 (FITC-65143, Clone: RPA-T4) and CoraLite® Plus 647-conjugated Mouse IgG1 isotype control antibody. Lymphocytes were gated for analysis. Cells were not fixed.