

Nur für Forschungszwecke

CD279 (PD-1) Monoklonaler Antikörper

Katalog-Nr.:CL647-65119



Allgemeine Informationen

Katalog-Nr.: CL647-65119	GenBank-Zugangsnummer: BC074740	Reinigungsmethode: Affinitätsreinigung
Größe: 100tests , 5 µl/test	GeneID (NCBI): 5133	CloneNo.: J110
Wirt: Maus	Vollständiger Name: programmed cell death 1	Anregungs-/Emissionsmaxima-Wellenlängen: 654 nm / 674 nm
Isotyp: IgG1	Berechnete Masse: 288 aa, 32 kDa	

Anwendungen

Geprüfte Anwendungen:
FC

Getestete Reaktivität:
Human

Hintergrundinformationen

Programmed cell death 1 (PD-1, also known as CD279) is an immunoinhibitory receptor that belongs to the CD28/CTLA-4 subfamily of the Ig superfamily. It is a 288 amino acid (aa) type I transmembrane protein composed of one Ig superfamily domain, a stalk, a transmembrane domain, and an intracellular domain containing an immunoreceptor tyrosine-based inhibitory motif (ITIM) as well as an immunoreceptor tyrosine-based switch motif (ITSM) (PMID: 18173375). PD-1 is expressed during thymic development and is induced in a variety of hematopoietic cells in the periphery by antigen receptor signaling and cytokines (PMID: 20636820). Engagement of PD-1 by its ligands PD-L1 or PD-L2 transduces a signal that inhibits T-cell proliferation, cytokine production, and cytolytic function (PMID: 19426218). It is critical for the regulation of T cell function during immunity and tolerance. Blockade of PD-1 can overcome immune resistance and also has been shown to have antitumor activity (PMID: 22658127; 23169436).

Lagerung

Lagerungsbedingungen:
Store at 2-8°C. Avoid exposure to light. Stable for one year after shipment.

Lagerungspuffer:
PBS mit 0,1% Natriumazid und 0,5% BSA, pH 7,3.

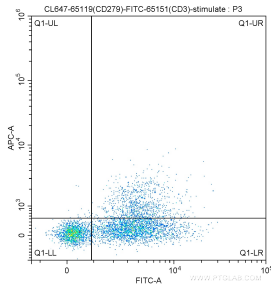
For technical support and original validation data for this product please contact:

T: 1 (888) 4PTGLAB (1-888-478-4522) (toll free in USA), or 1(312) 455-8498 (outside USA)

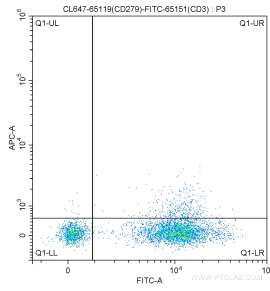
E: proteintech@ptglab.com
W: ptglab.com

This product is exclusively available under Proteintech Group brand and is not available to purchase from any other manufacturer.

Ausgewählte Validierungsdaten



1×10^6 PHA-stimulated ($5 \mu\text{g}/\text{mL}$, overnight) human peripheral blood lymphocytes were surface stained with $5.00 \mu\text{l}$ CoraLite® Plus 647-conjugated Anti-Human CD279 (PD-1) (CL647-65119, Clone: J110) and FITC Anti-Human CD3 (FITC-65151, Clone: UCHT1). Cells were not fixed.



1×10^6 human peripheral blood lymphocytes were surface stained with $5.00 \mu\text{l}$ CoraLite® Plus 647-conjugated Anti-Human CD279 (PD-1) (CL647-65119, Clone: J110) and FITC Anti-Human CD3 (FITC-65151, Clone: UCHT1). Cells were not fixed.