

Nur für Forschungszwecke

CD62L (L-Selectin) Monoklonaler Antikörper

Katalog-Nr.: CL647-65123



Allgemeine Informationen

Katalog-Nr.: CL647-65123	GenBank-Zugangsnummer: BC052681	Reinigungsmethode: Affinitätsreinigung
Größe: 100tests , 5 µl/test	GeneID (NCBI): 20343	CloneNo.: MEL-14
Wirt: Ratte	Vollständiger Name: selectin, lymphocyte	Empfohlene Verdünnungen: IF 1:200-1:800
Isotyp: IgG2a, kappa		Anregungs-/Emissionsmaxima-Wellenlängen: 654 nm / 674 nm

Anwendungen

Geprüfte Anwendungen: FC, IF	Positivkontrollen: IF : Maus-Splenozyten,
Getestete Reaktivität: Maus	

Hintergrundinformationen

CD62L, also known as L-selectin or SELL, is a member of the selectin family of adhesion molecules that also include CD62E (E-selectin) and CD62P (P-selectin) (PMID: 2663882, 2473156, 1382078). CD62L is a highly glycosylated protein of 95-105 kDa on neutrophils and 74 kDa on lymphocytes (PMID: 1382078; 1694883, 1695155). CD62L is expressed on the surface of most leukocytes, including lymphocytes, neutrophils, monocytes, eosinophils, hematopoietic progenitor cells, and immature thymocytes (PMID: 1694883, 1688580). It mediates the binding of lymphocytes to high endothelial venules (HEV) of peripheral lymph nodes through interactions with a constitutively expressed ligand, and is also involved in lymphocyte, neutrophil, and monocyte attachment to endothelium at sites of inflammation (PMID: 1382078).

Lagerung

Lagerungsbedingungen:
Store at 2-8°C. Avoid exposure to light. Stable for one year after shipment.
Lagerungspuffer:
PBS mit 0,1% Natriumazid und 0,5% BSA, pH 7,3.

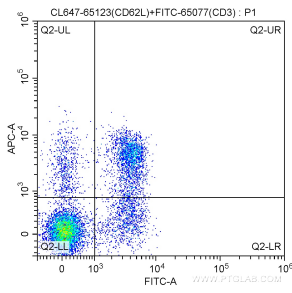
For technical support and original validation data for this product please contact:

T: 1 (888) 4PTGLAB (1-888-478-4522) (toll free in USA), or 1(312) 455-8498 (outside USA)

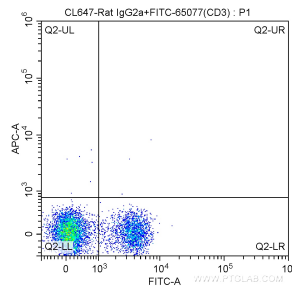
E: proteintech@ptglab.com
W: ptglab.com

This product is exclusively available under Proteintech Group brand and is not available to purchase from any other manufacturer.

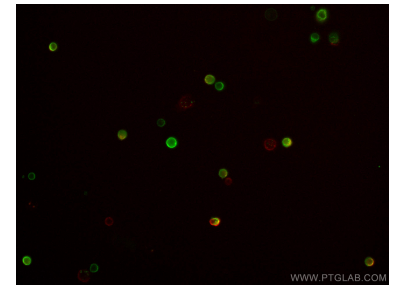
Ausgewählte Validierungsdaten



1X10⁶ C57BL/6 mouse splenocytes were surface stained with FITC-Anti-Mouse CD3 (FITC-65077, Clone: 17A2) and 5.00 ul CoraLite® Plus 647-conjugated Anti-Mouse CD62L (L-Selectin) (CL647-65123, Clone: MEL-14). Cells were not fixed.



1X10⁶ C57BL/6 mouse splenocytes were surface stained with FITC-Anti-Mouse CD3 (FITC-65077, Clone: 17A2) and CoraLite® Plus 647-conjugated Rat IgG2a isotype control antibody. Cells were not fixed.



Immunofluorescent analysis of mouse splenocytes using CoraLite® Plus 647-conjugated CD62L (L-Selectin) antibody (CL647-65123, Clone: MEL-14, red), and CoraLite® 488-conjugated CD3 antibody (CL488-65077, Clone: 17A2, green).