

Nur für Forschungszwecke

IgG2b Isotype Control Monoklonaler Antikörper



Katalog-Nr.:CL647-65128

Allgemeine Informationen

| | | |
|------------------------------------|---|--|
| Katalog-Nr.: CL647-65128 | GenBank-Zugangsnummer: GeneID (NCBI): 16016 | Reinigungsmethode: Affinitätsreinigung |
| Größe: 100ug , 200 µg/ml | Vollständiger Name: immunoglobulin heavy chain 3 (serum IgG2b) | CloneNo.: MPC-11 |
| Wirt: Maus | | Anregungs-/Emissionsmaxima-Wellenlängen: 654 nm / 674 nm |
| Isotyp: IgG2b | | |

Anwendungen

Geprüfte Anwendungen:
FC

Getestete Reaktivität:

Hintergrundinformationen

The MPC-11 immunoglobulin is useful as an isotype-matched control. The MPC-11 immunoglobulin has an unknown binding specificity and is used as an isotype control for mouse IgG2b antibodies. This antibody has been quality-tested for flow cytometry as negative control.

Lagerung

Lagerungsbedingungen:
Store at 2-8°C. Avoid exposure to light. Stable for one year after shipment.

Lagerungspuffer:
PBS mit 0,1% Natriumazid und 0,5% BSA, pH 7,3.

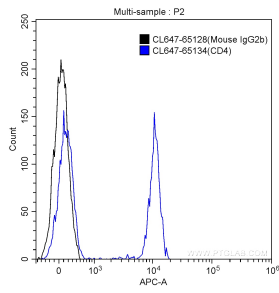
For technical support and original validation data for this product please contact:

T: 1 (888) 4PTGLAB (1-888-478-4522) (toll free in USA), or 1(312) 455-8498 (outside USA)

E: proteintech@ptglab.com
W: ptglab.com

This product is exclusively available under Proteintech Group brand and is not available to purchase from any other manufacturer.

Ausgewählte Validierungsdaten



1X10⁶ human peripheral blood lymphocytes were surface stained with 0.5 ug Coralite® Plus 647 Mouse IgG2b Isotype Control (CL647-65128, Clone:MPC-11) (blue) or Coralite® Plus 647-conjugated Anti-Human CD4 (CL647-65134, clone: OKT4) (black). Cells were not fixed.