

Nur für Forschungszwecke

CD11c Monoklonaler Antikörper

Katalog-Nr.:CL647-65130



Allgemeine Informationen

| | | |
|------------------------------------|--|--|
| Katalog-Nr.: CL647-65130 | GenBank-Zugangsnummer: BC167225 | Reinigungsmethode: Affinitätsreinigung |
| Größe: 100ug , 500 µg/ml | GeneID (NCBI): 16411 | CloneNo.: N418 |
| Wirt: Armenian Hamster | Vollständiger Name: integrin alpha X | Anregungs-/Emissionsmaxima-Wellenlängen: 654 nm / 674 nm |
| Isotyp: IgG | | |

Anwendungen

Geprüfte Anwendungen:
FC

Getestete Reaktivität:
Maus

Hintergrundinformationen

Integrins are cell adhesion receptors that are heterodimers composed of non-covalently associated α and β subunits (PMID: 9779984). CD11c, also known as integrin αX , is a type I transmembrane glycoprotein present on a variety of cells, including monocytes/macrophages, granulocytes, a subset of B cells, NK cells and dendritic cells (PMID: 2897326; 1680915; 1694698; 17389580). As a result of its high level of expression on most dendritic cells, CD11c is typically considered to be a marker of conventional dendritic cells (PMID: 27119555). CD11c forms an α/β heterodimer with CD18 (integrin $\beta 2$). CD11c/CD18 acts a receptor for fibrinogen and is important in monocyte adhesion and chemotaxis (PMID: 1671533).

Lagerung

Lagerungsbedingungen:
Store at 2-8°C. Avoid exposure to light. Stable for one year after shipment.

Lagerungspuffer:
PBS mit 0,1% Natriumazid und 0,5% BSA, pH 7,3.

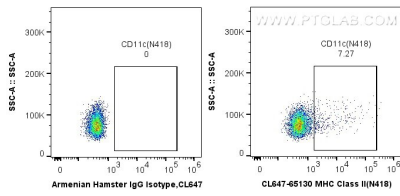
For technical support and original validation data for this product please contact:

T: 1 (888) 4PTGLAB (1-888-478-4522) (toll free in USA), or 1(312) 455-8498 (outside USA)

E: proteintech@ptglab.com
W: ptglab.com

This product is exclusively available under Proteintech Group brand and is not available to purchase from any other manufacturer.

Ausgewählte Validierungsdaten



1X10⁶ mouse splenocytes were surface stained with 0.5 ug CoraLite® Plus 647 Anti-Mouse CD11c (CL647-65130, Clone:N418) or 0.5 ug Control Antibody. Cells were not fixed.