

Nur für Forschungszwecke

CD8a Monoklonaler Antikörper

Katalog-Nr.:CL647-65135



Allgemeine Informationen

Katalog-Nr.: CL647-65135	GenBank-Zugangsnummer: BC025715	Reinigungsmethode: Affinitätsreinigung
Größe: 100tests , 5 µl/test	GeneID (NCBI): 925	CloneNo.: OKT8
Wirt: Maus	Vollständiger Name: CD8a molecule	Anregungs-/Emissionsmaxima-Wellenlängen: 654 nm / 674 nm
Isotyp: IgG2a, kappa	Berechnete Masse: 235 aa, 26 kDa	

Anwendungen

Geprüfte Anwendungen:
FC
Getestete Reaktivität:
Human

Hintergrundinformationen

CD8 is a transmembrane glycoprotein composed of two disulfide-linked chains. It can be present as a homodimer of CD8a or as a heterodimer of CD8a and CD8β (PMID: 3264320; 8253791). CD8 is found on most thymocytes. The majority of class I-restricted T cells express mostly the CD8aβ heterodimer while CD8aa homodimers alone have been found on some gut intraepithelial T cells , on some T cell receptor (TCR) γδ T cells and on NK cells (PMID: 2111591; 1831127; 8420975). CD8 acts as a co-receptor that binds to MHC class-I and participates in cytotoxic T cell activation (PMID: 8499079). During T cell development, CD8 is required for positive selection of CD4-/CD8+ T cells (PMID: 1968084).

Lagerung

Lagerungsbedingungen:
Store at 2-8°C. Avoid exposure to light. Stable for one year after shipment.
Lagerungspuffer:
PBS mit 0,1% Natriumazid und 0,5% BSA, pH 7,3.

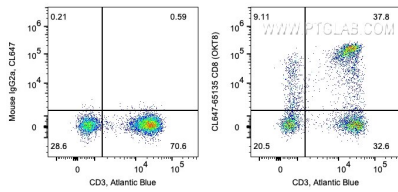
For technical support and original validation data for this product please contact:

T: 1 (888) 4PTGLAB (1-888-478-4522) (toll free in USA), or 1(312) 455-8498 (outside USA)

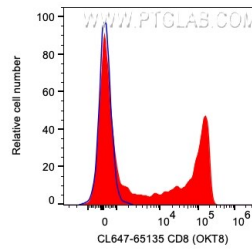
E: proteintech@ptglab.com
W: ptglab.com

This product is exclusively available under Proteintech Group brand and is not available to purchase from any other manufacturer.

Ausgewählte Validierungsdaten



1X10⁶ human PBMCs were surface co-stained with PacificBlue Anti-Human CD3 and 5 ul CoraLite® Plus 647 Anti-Human CD8a (CL647-65135, Clone: OKT8), or Mouse IgG2a Isotype Control. Cells were not fixed. Lymphocytes were gated.



1X10⁶ human PBMCs were surface stained with 5 ul CoraLite® Plus 647 Anti-Human CD8a (CL647-65135, Clone: OKT8), or Mouse IgG2a Isotype Control. Cells were not fixed. Lymphocytes were gated.