

Nur für Forschungszwecke

CD25 Monoklonaler Antikörper

Katalog-Nr.:CL647-65137



Allgemeine Informationen

Katalog-Nr.: CL647-65137	GenBank-Zugangsnummer: BC114437	Reinigungsmethode: Affinitätsreinigung
Größe: 100ug, 0.5 mg/ml	GeneID (NCBI): 16184	CloneNo.: PC61.5
Wirt: Ratte	Vollständiger Name: interleukin 2 receptor, alpha chain	Anregungs-/Emissionsmaxima-Wellenlängen: 654 nm / 674 nm
Isotyp: IgG1, lambda		

Anwendungen

Geprüfte Anwendungen:
FC

Getestete Reaktivität:
Maus

Hintergrundinformationen

Proliferation of T lymphocytes is triggered by the interaction of IL-2 with its specific receptor following T lymphocyte activation. The receptor for IL-2 has three forms, generated by different combinations of three different proteins, the alpha chain (IL-2R alpha), the beta chain (IL-2R beta), and the gamma chain (IL-2R gamma) (PMID: 8476561). IL-2R alpha (also known as CD25) is a type I transmembrane protein present on activated T cells, activated B cells, some thymocytes, myeloid precursors, and oligodendrocytes. CD25 is also found on natural CD4⁺Foxp3⁺ Treg cells (PMID: 22585674).

Lagerung

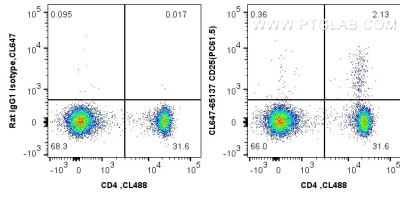
Lagerungsbedingungen:
Store at 2-8°C. Avoid exposure to light. Stable for one year after shipment.

Lagerungspuffer:
PBS mit 0,1% Natriumazid und 0,5% BSA, pH 7,3.

For technical support and original validation data for this product please contact:
T: 1 (888) 4PTGLAB (1-888-478-4522) (toll free in USA), or 1(312) 455-8498 (outside USA)
E: proteintech@ptglab.com
W: ptglab.com

This product is exclusively available under Proteintech Group brand and is not available to purchase from any other manufacturer.

Ausgewählte Validierungsdaten



1x10⁶ mouse splenocytes were surface stained with CoraLite® 488 Anti-Mouse CD4 (CL488-65104, Clone: GK1.5) and 0.5 µg CoraLite® Plus 647 Anti-Mouse CD25 (CL647-65137, Clone: PC61.5) or CoraLite® Plus 647-Conjugated rat IgG2a isotype control. Cells were not fixed.