

Nur für Forschungszwecke

NK1.1 (CD161) Monoklonaler Antikörper

Katalog-Nr.:CL647-65138



Allgemeine Informationen

| | | |
|---------------------------------------|---|--|
| Katalog-Nr.: CL647-65138 | GenBank-Zugangsnummer: BC120707 | Reinigungsmethode: Affinitätsreinigung |
| Größe: 100tests , 5 µl/test | GeneID (NCBI): 17057 | CloneNo.: PK136 |
| Wirt: Maus | Vollständiger Name: killer cell lectin-like receptor subfamily B member 1A | Anregungs-/Emissionsmaxima-Wellenlängen: 654 nm / 674 nm |
| Isotyp: IgG2a, kappa | | |

Anwendungen

Geprüfte Anwendungen:
FC

Getestete Reaktivität:
Maus

Hintergrundinformationen

NK1.1 (CD161), also known as KLRB1 or NKR-P1A, is a type II transmembrane C-type lectin-like receptor and is expressed on the cell membrane as disulfide-linked homodimer (PMID: 8077657). It is expressed by the majority of NK cells and subsets of peripheral T cells, including both CD4+ and CD8+ T cells, and is expressed preferentially on adult T cells with a "memory" antigenic phenotype (PMID: 8077657; 22566826). Expression of CD161 correlates with the cytotoxic function of CD16+ NK cells, and ligation of CD161 with its ligand LLT1 inhibits NK cell cytotoxicity and cytokine secretion (PMID: 29686665).

Lagerung

Lagerungsbedingungen:
Store at 2-8°C. Avoid exposure to light. Stable for one year after shipment.

Lagerungspuffer:
PBS mit 0,1% Natriumazid und 0,5% BSA, pH 7,3.

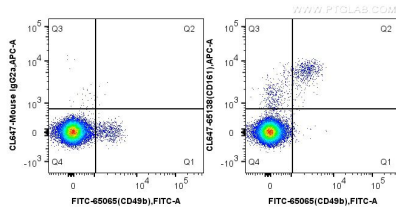
For technical support and original validation data for this product please contact:

T: 1 (888) 4PTGLAB (1-888-478-4522) (toll free in USA), or 1(312) 455-8498 (outside USA)

E: proteintech@ptglab.com
W: ptglab.com

This product is exclusively available under Proteintech Group brand and is not available to purchase from any other manufacturer.

Ausgewählte Validierungsdaten



1X10⁶ C57BL/6 mouse splenocytes were surface stained with FITC Anti-Mouse CD49b (DX5) (FITC-65065, Clone: DX5) and CoraLite® Plus 647-conjugated Mouse IgG2a isotype control antibody (left) or 5.00 ul CoraLite® Plus 647-conjugated Anti-Mouse NK1.1 (CD161) (CL647-65138, Clone: PK136) (right). Cells were not fixed.