

Nur für Forschungszwecke

Ly-6G/Ly-6C (Gr-1) Monoklonaler Antikörper

Katalog-Nr.:CL647-65140



Allgemeine Informationen

Katalog-Nr.: CL647-65140	GenBank-Zugangsnummer: X70920	Reinigungsmethode: Affinitätsreinigung
Größe: 100ug, 0.5 mg/ml	GeneID (NCBI): 546644	CloneNo.: RB6-8C5
Wirt: Ratte	Vollständiger Name: lymphocyte antigen 6 complex, locus G	Anregungs-/Emissionsmaxima-Wellenlängen: 654 nm / 674 nm
Isotyp: IgG2b, kappa		

Anwendungen

Geprüfte Anwendungen:
FC
Getestete Reaktivität:
Maus

Hintergrundinformationen

Ly-6G (lymphocyte antigen 6 complex, locus G), also known as Gr-1, is a 21-25 kDa, glycosylphosphatidylinositol-anchored protein expressed on myeloid lineage cells in mouse bone marrow (PMID: 8360469). The expression of Ly-6G increases on neutrophils as they differentiate from immature cells in the bone marrow to mature cells in the blood and spleen (PMID: 8890901). Antibodies targeting Ly6G (RB6-8C5 or 1A8) are commonly used in studies aimed at identifying the role of neutrophils (PMID: 23543767). The RB6-8C5 mAb has been reported to cross-react with Ly-6C on cells expressing Ly-6C (PMID: 8360469).

Lagerung

Lagerungsbedingungen:
Store at 2-8°C. Avoid exposure to light. Stable for one year after shipment.
Lagerungspuffer:
PBS mit 0,1% Natriumazid und 0,5% BSA, pH 7,3.

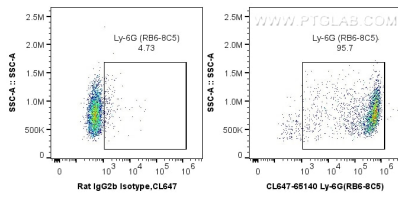
For technical support and original validation data for this product please contact:

T: 1 (888) 4PTGLAB (1-888-478-4522) (toll free in USA), or 1(312) 455-8498 (outside USA)

E: proteintech@ptglab.com
W: ptglab.com

This product is exclusively available under Proteintech Group brand and is not available to purchase from any other manufacturer.

Ausgewählte Validierungsdaten



1X10⁶ mouse bone marrow cells were surface stained with 0.5 ug CoraLite® Plus 647 Anti-Mouse Ly-6G/Ly-6C (Gr-1) (CL647-65140, Clone: RB6-8C5), or 0.5 ug Control Antibody. Cells were not fixed.