

Nur für Forschungszwecke

CD8a Monoklonaler Antikörper

Katalog-Nr.:CL647-65144



Allgemeine Informationen

Katalog-Nr.: CL647-65144	GenBank-Zugangsnummer: BC025715	Reinigungsmethode: Affinitätsreinigung
Größe: 100tests , 5 µl/test	GeneID (NCBI): 925	CloneNo.: RPA-T8
Wirt: Maus	Vollständiger Name: CD8a molecule	Anregungs-/Emissionsmaxima-Wellenlängen: 654 nm / 674 nm
Isotyp: IgG1, kappa	Berechnete Masse: 235 aa, 26 kDa	

Anwendungen

Geprüfte Anwendungen:
FC
Getestete Reaktivität:
Human

Hintergrundinformationen

CD8 is a transmembrane glycoprotein composed of two disulfide-linked chains. It can be present as a homodimer of CD8a or as a heterodimer of CD8a and CD8β (PMID: 3264320; 8253791). CD8 is found on most thymocytes. The majority of class I-restricted T cells express mostly the CD8aβ heterodimer while CD8aa homodimers alone have been found on some gut intraepithelial T cells , on some T cell receptor (TCR) γδ T cells and on NK cells (PMID: 2111591; 1831127; 8420975). CD8 acts as a co-receptor that binds to MHC class-I and participates in cytotoxic T cell activation (PMID: 8499079). During T cell development, CD8 is required for positive selection of CD4-/CD8+ T cells (PMID: 1968084).

Lagerung

Lagerungsbedingungen:
Store at 2-8°C. Avoid exposure to light. Stable for one year after shipment.
Lagerungspuffer:
PBS mit 0,1% Natriumazid und 0,5% BSA, pH 7,3.

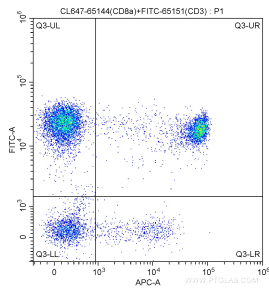
For technical support and original validation data for this product please contact:

T: 1 (888) 4PTGLAB (1-888-478-4522) (toll free in USA), or 1(312) 455-8498 (outside USA)

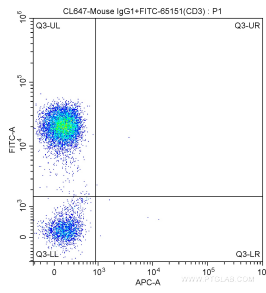
E: proteintech@ptglab.com
W: ptglab.com

This product is exclusively available under Proteintech Group brand and is not available to purchase from any other manufacturer.

Ausgewählte Validierungsdaten



100 ul human peripheral blood were surface stained with FITC Anti-Human CD3 (FITC-65151, Clone: UCHT1) and 5.00 ul CoraLite® Plus 647-conjugated Anti-Human CD8a (CL647-65144, Clone: RPA-T8). Lymphocytes were gated for analysis. Cells were not fixed.



100 ul human peripheral blood were surface stained with FITC Anti-Human CD3 (FITC-65151, Clone: UCHT1) and CoraLite® Plus 647-conjugated Mouse IgG1 isotype control antibody. Lymphocytes were gated for analysis. Cells were not fixed.