

Nur für Forschungszwecke

CD279 Monoklonaler Antikörper

Katalog-Nr.:CL647-65168



Allgemeine Informationen

Katalog-Nr.: CL647-65168	GenBank-Zugangsnummer: BC074740	Reinigungsmethode: Affinitätsreinigung
Größe: 100tests , 5 µl/test	GeneID (NCBI): 5133	CloneNo.: EH12.2H7
Wirt: Maus	Vollständiger Name: programmed cell death 1	Anregungs-/Emissionsmaxima-Wellenlängen: 654 nm / 674 nm
Isotyp: IgG1, kappa	Berechnete Masse: 288 aa, 32 kDa	

Anwendungen

Geprüfte Anwendungen:
FC

Getestete Reaktivität:
Human, Nicht-Humane Primaten

Hintergrundinformationen

Programmed cell death 1 (PD-1, also known as CD279) is an immunoinhibitory receptor that belongs to the CD28/CTLA-4 subfamily of the Ig superfamily. It is a 288 amino acid (aa) type I transmembrane protein composed of one Ig superfamily domain, a stalk, a transmembrane domain, and an intracellular domain containing an immunoreceptor tyrosine-based inhibitory motif (ITIM) as well as an immunoreceptor tyrosine-based switch motif (ITSM) (PMID: 18173375). PD-1 is expressed during thymic development and is induced in a variety of hematopoietic cells in the periphery by antigen receptor signaling and cytokines (PMID: 20636820). Engagement of PD-1 by its ligands PD-L1 or PD-L2 transduces a signal that inhibits T-cell proliferation, cytokine production, and cytolytic function (PMID: 19426218). It is critical for the regulation of T cell function during immunity and tolerance. Blockade of PD-1 can overcome immune resistance and also has been shown to have antitumor activity (PMID: 22658127; 23169436).

Lagerung

Lagerungsbedingungen:
Store at 2-8°C. Avoid exposure to light. Stable for one year after shipment.

Lagerungspuffer:
PBS with 0.09% sodium azide and 0.5% BSA.

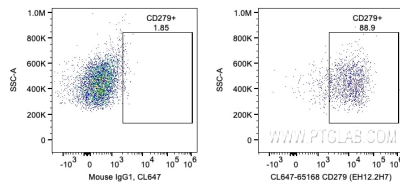
For technical support and original validation data for this product please contact:

T: 1 (888) 4PTGLAB (1-888-478-4522) (toll free in USA), or 1(312) 455-8498 (outside USA)

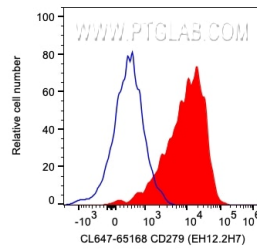
E: proteintech@ptglab.com
W: ptglab.com

This product is exclusively available under Proteintech Group brand and is not available to purchase from any other manufacturer.

Ausgewählte Validierungsdaten



1X10⁶ day 3 PHA activated human PBMCs were surface stained with 5 ul CoraLite® Plus 647 Anti-Human CD279 (CL647-65168, Clone:EH12.2H7) or Mouse IgG1 Isotype Control. Cells were not fixed. Lymphocytes were gated.



1X10⁶ day 3 PHA activated human PBMCs were surface stained with 5 ul CoraLite® Plus 647 Anti-Human CD279 (CL647-65168, Clone:EH12.2H7) or Mouse IgG1 Isotype Control. Cells were not fixed. Lymphocytes were gated.