

Nur für Forschungszwecke

CD163 Monoklonaler Antikörper

Katalog-Nr.:CL647-65169



Allgemeine Informationen

Katalog-Nr.: CL647-65169	GenBank-Zugangsnummer: BC051281	Reinigungsmethode: Protein-G-Reinigung
Größe: 100tests , 5 µl/test	GeneID (NCBI): 9332	CloneNo.: GHI/61
Wirt: Maus	Vollständiger Name: CD163 molecule	Anregungs-/Emissionsmaxima-Wellenlängen: 654 nm / 674 nm
Isotyp: IgG1, kappa	Berechnete Masse: 1156 aa, 125 kDa	

Anwendungen

Geprüfte Anwendungen:
FC

Getestete Reaktivität:
Human

Hintergrundinformationen

CD163, also known as M130, is a membrane glycoprotein which belongs to the scavenger receptor superfamily (PMID: 8370408). It is an acute phase-regulated and signal-inducing macrophage protein expressed exclusively in monocytes and tissue macrophages (PMID: 11196644). CD163 mediates endocytosis of haptoglobin-haemoglobin complexes (PMID: 11196644). The uptake of haptoglobin by macrophages contributes to the recycling of iron and also to the inflammatory response (PMID: 22900885). Soluble CD163 (sCD163), as a result of ectodomain shedding during inflammatory activation of macrophages, circulates in blood and has been suggested as a plasma/serum marker for macrophage activity (PMID: 12570164).

Lagerung

Lagerungsbedingungen:
Store at 2-8°C. Avoid exposure to light. Stable for one year after shipment.

Lagerungspuffer:
PBS mit 0,1% Natriumazid und 0,5% BSA, pH 7,3.

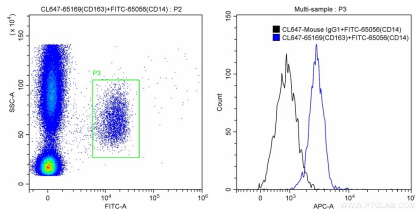
For technical support and original validation data for this product please contact:

T: 1 (888) 4PTGLAB (1-888-478-4522) (toll free in USA), or 1(312) 455-8498 (outside USA)

E: proteintech@ptglab.com
W: ptglab.com

This product is exclusively available under Proteintech Group brand and is not available to purchase from any other manufacturer.

Ausgewählte Validierungsdaten



100 ul human peripheral blood were surface stained with 10 ul FITC-Anti-Human CD14 (FITC-65056, Clone: UCHM-1), and 5 ul CoraLite® Plus 647-conjugated Anti-Human CD163 (CL647-65169, Clone: GH1/61) or CoraLite® Plus 647-conjugated Mouse IgG1 isotype control. Cells were then treated with red blood cell lysis buffer and were gated for CD14+ monocytes for analysis of CD163 staining. Cells were not fixed.