

Nur für Forschungszwecke

# CD235a Monoklonaler Antikörper

Katalog-Nr.:CL647-65174



## Allgemeine Informationen

<b>Katalog-Nr.:</b> CL647-65174	<b>GenBank-Zugangsnummer:</b> BC005319	<b>Reinigungsmethode:</b> Affinitätsreinigung
<b>Größe:</b> 100tests , 5 µl/test	<b>GeneID (NCBI):</b> 2993	<b>CloneNo.:</b> HIR2
<b>Wirt:</b> Maus	<b>Vollständiger Name:</b> glycophorin A (MNS blood group)	<b>Anregungs-/Emissionsmaxima-Wellenlängen:</b> 654 nm / 674 nm
<b>Isotyp:</b> IgG2b, kappa	<b>Berechnete Masse:</b> 150 aa, 16 kDa	

## Anwendungen

**Geprüfte Anwendungen:**  
FC

**Getestete Reaktivität:**  
Human

## Hintergrundinformationen

Glycophorin A (GYPA) is the major transmembrane sialoglycoprotein in erythrocytes. It is a dimeric type I transmembrane protein carrying 15 closely clustered O-linked tetrasaccharides capped with sialic acid/N-acetylneuraminic acid (Neu5Ac). This 36 kDa protein represents the major sialoglycoprotein of the red blood cell membrane displaying about one million copies per cell. (PMID: 9490702)

## Lagerung

**Lagerungsbedingungen:**  
Store at 2-8°C. Avoid exposure to light. Stable for one year after shipment.

**Lagerungspuffer:**  
PBS with 0.09% sodium azide and 0.5% BSA.

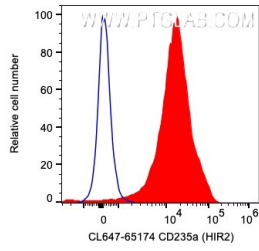
For technical support and original validation data for this product please contact:

T: 1 (888) 4PTGLAB (1-888-478-4522) (toll free in USA), or 1(312) 455-8498 (outside USA)

E: [proteintech@ptglab.com](mailto:proteintech@ptglab.com)  
W: [ptglab.com](http://ptglab.com)

**This product is exclusively available under Proteintech Group brand and is not available to purchase from any other manufacturer.**

## Ausgewählte Validierungsdaten



1X10<sup>6</sup> human red blood cells were surface stained with 5 ul CoraLite® Plus 647 Anti-Human CD235a (CL647-65174, Clone:HIR2) (red) or Mouse IgG2b Isotype Control. Cells were not fixed.