

Nur für Forschungszwecke

CD13 Monoklonaler Antikörper

Katalog-Nr.:CL647-65186



Allgemeine Informationen

Katalog-Nr.: CL647-65186	GenBank-Zugangsnummer: BC058928	Reinigungsmethode: Mit Protein-A- Affinitätschromatographie gereinigt
Größe: 100tests , 5 µl/test	GeneID (NCBI): 290	CloneNo.: WM15
Wirt: Maus	Vollständiger Name: alanyl (membrane) aminopeptidase	Anregungs-/Emissionsmaxima- Wellenlängen: 654 nm / 674 nm
Isotyp: IgG1, kappa	Berechnete Masse: 110 kDa	

Anwendungen

Geprüfte Anwendungen:
FC

Getestete Reaktivität:
Human, Nicht-Humane Primaten

Hintergrundinformationen

CD13, also named as APN, ANPEP (aminopeptidase N) or PEPN, is belongs to the peptidase M1 family. CD13 is a heavily glycosylated, ~150-240 kDa, type-II membrane, expressed by most cells of myeloid origin including monocytes, macrophages, granulocytes, and their hematopoietic precursors. It is also abundantly expressed in the brush border of epithelial cells from renal proximal tubules and small intestine, in prostatic epithelial cells, in bile duct canaliculi, in mast cells, and, in some cases, in fibroblasts and smooth muscle cells. CD13 is a multifunctional protein and plays varying roles in cell migration, cell proliferation, cell differentiation and so on. CD13 participates in angiogenesis generating and modulating angiogenic signals, and can be a marker of angiogenic vessels. CD13 is also a pan-myeloid marker, present on mature granulocytes and monocytes. (PMID: 8805662, 10098327, 18603472, 18097955, 17897790, 17888402, 21339174)

Lagerung

Lagerungsbedingungen:
Store at 2-8°C. Avoid exposure to light. Stable for one year after shipment.

Lagerungspuffer:
PBS with 0.09% sodium azide and 0.5% BSA.

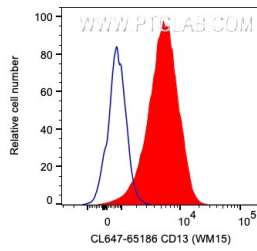
For technical support and original validation data for this product please contact:

T: 1 (888) 4PTGLAB (1-888-478-4522) (toll free
in USA), or 1(312) 455-8498 (outside USA)

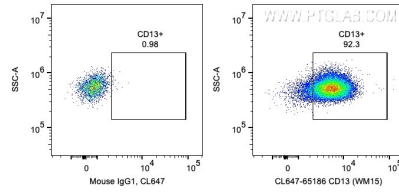
E: proteintech@ptglab.com
W: ptglab.com

This product is exclusively available under Proteintech Group brand and is not available to purchase from any other manufacturer.

Ausgewählte Validierungsdaten



1X10⁶ human PBMCs were surface stained with 5 ul CoraLite® Plus 647 Anti-Human CD13 (CL647-65186, Clone: WM15), or Mouse IgG1 Isotype Control. Cells were not fixed. Granulocytes and monocytes were gated.



1X10⁶ human PBMCs were surface stained with 5 ul CoraLite® Plus 647 Anti-Human CD13 (CL647-65186, Clone: WM15), or Mouse IgG1 Isotype Control. Cells were not fixed. Granulocytes and monocytes were gated.