

Nur für Forschungszwecke

# CD2 Monoklonaler Antikörper

Katalog-Nr.:CL647-65192



## Allgemeine Informationen

<b>Katalog-Nr.:</b> CL647-65192	<b>GenBank-Zugangsnummer:</b> BC033583	<b>Reinigungsmethode:</b> Protein-G-Reinigung
<b>Größe:</b> 100tests , 5 µl/test	<b>GeneID (NCBI):</b> 914	<b>CloneNo.:</b> TS1/8
<b>Wirt:</b> Maus	<b>Vollständiger Name:</b> CD2 molecule	<b>Anregungs-/Emissionsmaxima-Wellenlängen:</b> 654 nm / 674 nm
<b>Isotyp:</b> IgG1, kappa	<b>Berechnete Masse:</b> 351 aa, 39 kDa	

## Anwendungen

**Geprüfte Anwendungen:**  
FC

**Getestete Reaktivität:**  
Human

## Hintergrundinformationen

CD2 is a cell surface glycoprotein present on a majority of thymocytes, all mature T cells and subset of NK cells but not on B lymphocytes. It is a pan T-cell marker. CD2 interacts with lymphocyte function-associated antigen (LFA-3/CD58) and CD48/BCM1 to mediate adhesion between T-cells and other cell types. CD2 is implicated in the triggering of T-cells, the cytoplasmic domain is implicated in the signaling function.

## Lagerung

**Lagerungsbedingungen:**  
Store at 2-8°C. Avoid exposure to light. Stable for one year after shipment.

**Lagerungspuffer:**  
PBS mit 0,1% Natriumazid und 0,5% BSA, pH 7,3.

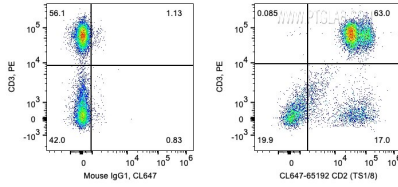
For technical support and original validation data for this product please contact:

T: 1 (888) 4PTGLAB (1-888-478-4522) (toll free in USA), or 1(312) 455-8498 (outside USA)

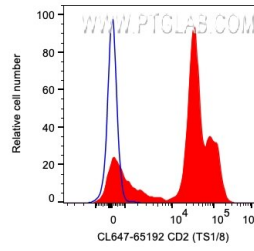
E: [proteintech@ptglab.com](mailto:proteintech@ptglab.com)  
W: [ptglab.com](http://ptglab.com)

**This product is exclusively available under Proteintech Group brand and is not available to purchase from any other manufacturer.**

## Ausgewählte Validierungsdaten



1X10<sup>6</sup> human PBMCs were surface co-stained with PE Anti-Human CD3 and 5 ul CoraLite® Plus 647 Anti-Human CD2 (CL647-65192, Clone:TS1/8) or Mouse IgG1 Isotype Control. Cells were not fixed. Lymphocytes were gated.



1X10<sup>6</sup> human PBMCs were surface stained with 5 ul CoraLite® Plus 647 Anti-Human CD2 (CL647-65192, Clone:TS1/8) or Mouse IgG1 Isotype Control. Cells were not fixed. Lymphocytes were gated.