

Nur für Forschungszwecke

CD21 Monoklonaler Antikörper

Katalog-Nr.:CL647-65198



Allgemeine Informationen

Katalog-Nr.: CL647-65198	GenBank-Zugangsnummer: BC136394	Reinigungsmethode: Protein-G-Reinigung
Größe: 100tests , 5 µl/test	GeneID (NCBI): 1380	CloneNo.: BU32
Wirt: Maus	Vollständiger Name: complement component (3d/Epstein Barr virus) receptor 2	Anregungs-/Emissionsmaxima- Wellenlängen: 654 nm / 674 nm
Isotyp: IgG1, kappa	Berechnete Masse: 1092 aa, 119 kDa	

Anwendungen

Geprüfte Anwendungen:
FC

Getestete Reaktivität:
Human

Hintergrundinformationen

CD21, also known as complement receptor type 2 (CR2), complement C3d receptor, and Epstein-Barr virus receptor, is a transmembrane protein that contains a small cytoplasmic domain, a transmembrane region and an extracellular domain consisting of 15 tandem short consensus repeat sequences (PMID: 6230668; 2551147). It is expressed on B cells, follicular dendritic cells, thymocytes and a subset of peripheral T cells (PMID: 26119182). CD21 binds complement fragments C3d, C3dg and iC3b and acts as a receptor for the Epstein-Barr virus (PMID: 7753047). On B cells, together with CD19 and CD81, CD21 forms a complex that functions as a co-receptor to the BCR (PMID: 7542009). It is involved in B cells activation and functions.

Lagerung

Lagerungsbedingungen:
Store at 2-8°C. Avoid exposure to light. Stable for one year after shipment.

Lagerungspuffer:
PBS mit 0,1% Natriumazid und 0,5% BSA, pH 7,3.

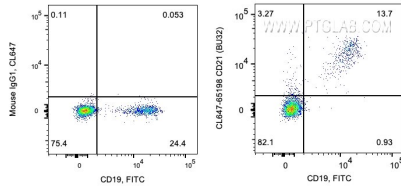
For technical support and original validation data for this product please contact:

T: 1 (888) 4PTGLAB (1-888-478-4522) (toll free
in USA), or 1(312) 455-8498 (outside USA)

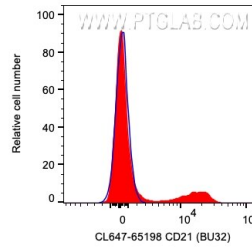
E: proteintech@ptglab.com
W: ptglab.com

This product is exclusively available under Proteintech Group brand and is not available to purchase from any other manufacturer.

Ausgewählte Validierungsdaten



1X10⁶ human PBMCs were surface co-stained with FITC-CD19 and 5 ul CoraLite® Plus 647 Anti-Human CD21 (CL647-65198, Clone: BU32), or APC Mouse IgG1 Isotype Control (APC-65124, Clone: MOPC-21). Cells were not fixed. Lymphocytes were gated.



1X10⁶ human PBMCs were surface stained with 5 ul CoraLite® Plus 647 Anti-Human CD21 (CL647-65198, Clone: BU32), or APC Mouse IgG1 Isotype Control (APC-65124, Clone: MOPC-21). Cells were not fixed. Lymphocytes were gated.