

Nur für Forschungszwecke

# CD68 Monoklonaler Antikörper

Katalog-Nr.:CL647-65202



## Allgemeine Informationen

<b>Katalog-Nr.:</b> CL647-65202	<b>GenBank-Zugangsnummer:</b> BC015557	<b>Reinigungsmethode:</b> Protein-G-Reinigung
<b>Größe:</b> 100tests , 5 µl/test	<b>GeneID (NCBI):</b> 968	<b>CloneNo.:</b> KP1
<b>Wirt:</b> Maus	<b>Vollständiger Name:</b> CD68 molecule	<b>Anregungs-/Emissionsmaxima-Wellenlängen:</b> 654 nm / 674 nm
<b>Isotyp:</b> IgG1, kappa	<b>Berechnete Masse:</b> 37 kDa	

## Anwendungen

**Geprüfte Anwendungen:**  
FC (Intra)

**Getestete Reaktivität:**  
Human

## Hintergrundinformationen

CD68 is a type I transmembrane glycoprotein that is highly expressed by human monocytes and tissue macrophages. It belongs to the lysosomal/endosomal-associated membrane glycoprotein (LAMP) family and primarily localizes to lysosomes and endosomes with a smaller fraction circulating to the cell surface. CD68 is also a member of the scavenger receptor family. It may play a role in phagocytic activities of tissue macrophages.

## Lagerung

**Lagerungsbedingungen:**  
Store at 2-8°C. Avoid exposure to light. Stable for one year after shipment.

**Lagerungspuffer:**  
PBS mit 0,1% Natriumazid und 0,5% BSA, pH 7,3.

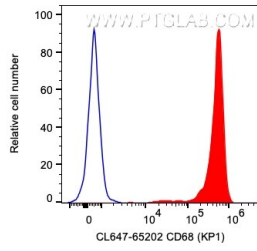
For technical support and original validation data for this product please contact:

T: 1 (888) 4PTGLAB (1-888-478-4522) (toll free in USA), or 1(312) 455-8498 (outside USA)

E: [proteintech@ptglab.com](mailto:proteintech@ptglab.com)  
W: [ptglab.com](http://ptglab.com)

**This product is exclusively available under Proteintech Group brand and is not available to purchase from any other manufacturer.**

## Ausgewählte Validierungsdaten



1X10<sup>6</sup> human PBMCs were intracellularly stained with 5  $\mu$ l CoraLite® Plus 647 Anti-Human CD68 (CL647-65202, Clone: KP1), or Mouse IgG1 Isotype Control. Cells were fixed and permeabilized with Transcription Factor Staining Buffer. Monocytes were gated.