

Nur für Forschungszwecke

# IgG2a Isotype Control Monoklonaler Antikörper



Katalog-Nr.:CL647-65208

## Allgemeine Informationen

<b>Katalog-Nr.:</b> CL647-65208	<b>GenBank-Zugangsnummer:</b> GeneID (NCBI):	<b>Reinigungsmethode:</b> Affinitätsreinigung
<b>Größe:</b> 100ug, 0.5 mg/mL	<b>Vollständiger Name:</b>	<b>CloneNo.:</b> C1.18.4
<b>Wirt:</b> Maus		<b>Anregungs-/Emissionsmaxima-Wellenlängen:</b> 654 nm / 674 nm
<b>Isotyp:</b> IgG2a, κ		

## Anwendungen

**Geprüfte Anwendungen:**  
FC  
**Getestete Reaktivität:**

## Hintergrundinformationen

The C1.18.4 immunoglobulin is useful as an isotype-matched control. The C.1.18.4 immunoglobulin has an unknown binding specificity and is used as an isotype control for mouse IgG2a antibodies. This antibody has been quality-tested for flow cytometry as negative control.

## Lagerung

**Lagerungsbedingungen:**  
Bei 2-8°C lagern. Vor Licht schützen.  
**Lagerungspuffer:**  
PBS mit 0,1% Natriumazid und 0,5% BSA, pH 7,3.

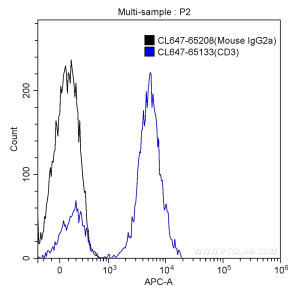
For technical support and original validation data for this product please contact:

T: 1 (888) 4PTGLAB (1-888-478-4522) (toll free in USA), or 1(312) 455-8498 (outside USA)

E: [proteintech@ptglab.com](mailto:proteintech@ptglab.com)  
W: [ptglab.com](http://ptglab.com)

**This product is exclusively available under Proteintech Group brand and is not available to purchase from any other manufacturer.**

## Ausgewählte Validierungsdaten



1X10<sup>6</sup> human peripheral blood lymphocytes were surface stained with CoraLite® Plus 647-conjugated Mouse IgG2a Isotype Control (CL647-65208, Clone: C1.18.4) (black) or CoraLite® Plus 647-conjugated Anti-Human CD3 (CL647-65133, Clone: OKT3) (blue). Cells were not fixed.