

Nur für Forschungszwecke

# IgG2b Isotype Control Monoklonaler Antikörper



Katalog-Nr.:CL647-65211

## Allgemeine Informationen

<b>Katalog-Nr.:</b> CL647-65211	<b>GenBank-Zugangsnummer:</b> GeneID (NCBI):	<b>Reinigungsmethode:</b> Affinitätsreinigung
<b>Größe:</b> 100ug, 0.2 mg/mL	<b>Vollständiger Name:</b>	<b>CloneNo.:</b> LTF-2
<b>Wirt:</b> Ratte		<b>Anregungs-/Emissionsmaxima-Wellenlängen:</b> 654 nm / 674 nm
<b>Isotyp:</b> IgG2b		

## Anwendungen

**Geprüfte Anwendungen:**  
FC  
**Getestete Reaktivität:**

## Hintergrundinformationen

The LTF-2 immunoglobulin is useful as an isotype-matched control. The LTF-2 immunoglobulin has an unknown binding specificity and is used as an isotype control for rat IgG2b antibodies. This antibody has been quality-tested for flow cytometry as negative control.

## Lagerung

**Lagerungsbedingungen:**  
Store at 2-8°C. Avoid exposure to light. Stable for one year after shipment.  
**Lagerungspuffer:**  
PBS mit 0,1% Natriumazid und 0,5% BSA, pH 7,3.

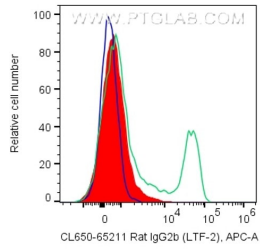
For technical support and original validation data for this product please contact:

T: 1 (888) 4PTGLAB (1-888-478-4522) (toll free in USA), or 1(312) 455-8498 (outside USA)

E: [proteintech@ptglab.com](mailto:proteintech@ptglab.com)  
W: [ptglab.com](http://ptglab.com)

**This product is exclusively available under Proteintech Group brand and is not available to purchase from any other manufacturer.**

## Ausgewählte Validierungsdaten



1X10<sup>6</sup> mouse splenocytes were surface stained with 0.2 µg CoraLite® Plus 647 Rat IgG2b Isotype Control (CL647-65211, Clone:LTF-2) (red), CoraLite® Plus 647 Anti-Mouse CD4 (green), or unstained (blue). Cells were not fixed. CD8-negative lymphocytes were gated.