

Nur für Forschungszwecke

# LRP1 Monoklonaler Antikörper

Katalog-Nr.:CL647-65233



## Allgemeine Informationen

**Katalog-Nr.:**

CL647-65233

**Größe:**

100tests , 5 µl/test

**Wirt:**

Maus

**Isotyp:**

IgG2b

**GenBank-Zugangsnummer:**

BC045107

**GeneID (NCBI):**

4035

**Vollständiger Name:**

low density lipoprotein-related protein 1 (alpha-2-macroglobulin receptor)

**Berechnete Masse:**

505 kDa

**Reinigungsmethode:**

Affinitätsreinigung

**CloneNo.:**

5A6

**Anregungs-/Emissionsmaxima-Wellenlängen:**

654 nm / 674 nm

## Anwendungen

**Geprüfte Anwendungen:**

FC

**Getestete Reaktivität:**

Human

## Hintergrundinformationen

### Lagerung

**Lagerungsbedingungen:**

Store at 2-8°C. Avoid exposure to light. Stable for one year after shipment.

**Lagerungspuffer:**

PBS with 0.09% sodium azide.

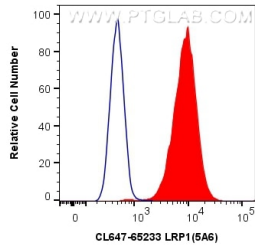
For technical support and original validation data for this product please contact:

T: 1 (888) 4PTGLAB (1-888-478-4522) (toll free in USA), or 1(312) 455-8498 (outside USA)

E: [proteintech@ptglab.com](mailto:proteintech@ptglab.com)  
W: [ptglab.com](http://ptglab.com)

This product is exclusively available under Proteintech Group brand and is not available to purchase from any other manufacturer.

## Ausgewählte Validierungsdaten



1X10<sup>6</sup> U-87 MG cells were surface stained with 5  $\mu$ l CoraLite® Plus 647 Anti-Human LRP1 (CL647-65233, Clone:5A6) (red) or Control Antibody. Cells were not fixed.